

# The YouthBuild Story



**“There’s a lot of love in YouthBuild, and some day we’re going to spread it around the world.”**

*Victor Ortiz, age 17, Youth Action Program (1981)*

# History of the YouthBuild Movement

- 1978** First YB begins in NYC at Y.A.P.
- 1984-86** NYC expansion to 9 sites
- 1990** YouthBuild USA is incorporated
- 1990-94** 15 sites open in 11 cities
- 1995** Received a federal line item under HUD
- 1994-06** 226 YouthBuild programs in 44 states
- 2003-08** Gates Foundation grants (\$18M), largest recipient of CNCS grant (\$4.6M), Wal Mart Grant (\$5M), criminal justice re-entry project (\$12.2M)
- 2007 -** DOL YouthBuild era begins
- 2009 -** 183 YouthBuild programs are funded by DOL

# A Typical YouthBuild Program

- 30-50 young people – more in schools
- 16-24 years of age
- 5 components
- 10-12 months – longer engagement at schools
- 6-10 staff or based on size of enrollment

**Key Quality:**

*Respect for Young People*

# YouthBuild Facts

<b>Male</b>	<b>73%</b>
<b>Female</b>	<b>27%</b>
<b>African American</b>	<b>47%</b>
<b>White</b>	<b>23%</b>
<b>Latino</b>	<b>23%</b>
<b>Adjudicated</b>	<b>36%</b>
<b>On Public Assistance</b>	<b>26%</b>
<b>Parents</b>	<b>25%</b>
<b>Average age</b>	<b>19.1</b>

# 5 components of YouthBuild

## CONSTRUCTION

supervised training  
employer expectations  
career readiness skills  
vocational education  
pre-apprenticeship

## EDUCATION

Basic academic skills  
GED or diploma  
vocational skills  
college success  
Culturally relevant  
curriculum and project  
based learning

## LEADERSHIP

decision making  
group facilitation  
program leadership roles  
public speaking  
negotiating  
community service  
advocacy

## COUNSELING

peer counseling  
individual counseling  
group counseling  
case management  
referrals outside  
life skills  
goals

## GRADUATE RESOURCES

college counseling  
pre-employment skills  
pre-apprenticeship skills  
career counseling  
career development  
Placement follow-up

# Success Highlights of Graduates\*\*

- 74.6% are currently working, going to college, and/or in job training
- 76.2% are free of government supports and not receiving food stamps, welfare payments or unemployment benefits
- 85% have some involvement with the community
- 92% have positive attitudes
- 80% are free of negative behaviors

\*\* Source: “Life After YouthBuild” study of 882 graduates. Brandeis and Temple Universities. 2004

# Comparison of behaviors before entering and after completing YouthBuild

	before YouthBuild	after YouthBuild	% point change
Has a GED or diploma	21.7%	59.2%	37.5%
Is a parent	35.0%	52.7%	17.7%
Used marijuana	71.6%	25.1%	- 46.5%
Used hard drugs	29.7%	6.4%	- 23.3%
Sold marijuana	37.7%	8.6%	- 29.1%
Sold hard drugs	32.4%	7.8%	- 24.6%
Used alcohol	75.7%	42.9%	- 32.8%
Arrested	55.6%	26.2%	- 29.4%
Convicted of a misdemeanor	37.5%	15.3%	- 22.2%
Convicted of a felony	27.0%	9.2%	- 17.8%
Been a victim of abuse or violence	19.6%	10.8%	- 8.8%
Been homeless	26.0%	11.7%	- 14.3%
"What age do you think you would live to?"	40 years	75 years	35 years

# YouthBuild Facts

- 226 programs in 44 states, 100+ DOL YBs
- Average Outcome Data
  - retention 68%
  - attendance 77%
  - placement 71%
  - GED's/diplomas 52%
  - average wage \$8.79/ hour
- 8,000 young people now in YouthBuild
- 76,000 young people have built 17,000 units of housing since 1994
- \$650M in HUD funding, 1993-2006; \$50M in stimulus DOL funds - 2009

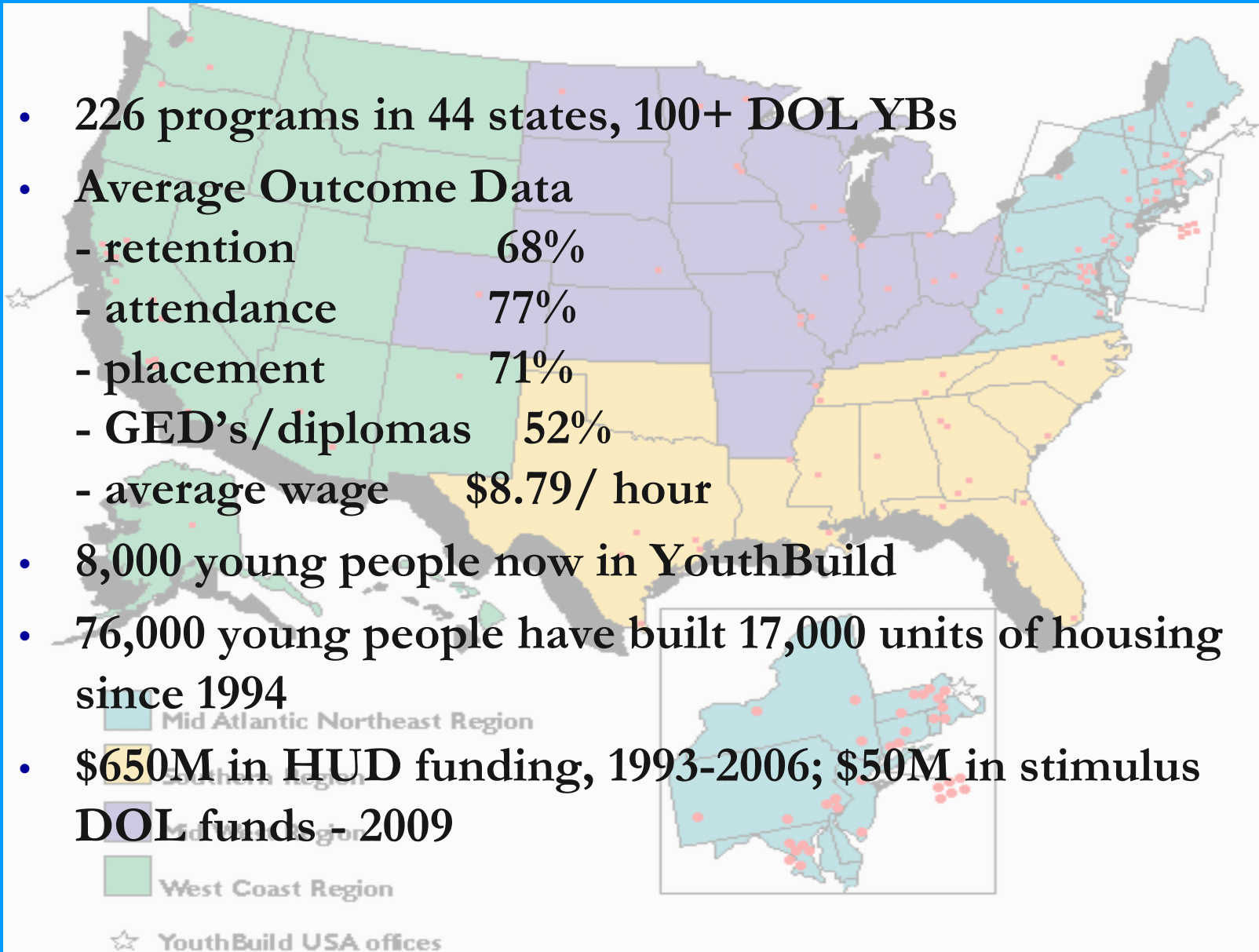
Mid Atlantic Northeast Region

Southern Region

Midwest Region

West Coast Region

☆ YouthBuild USA offices



# Fundamental Principles of YouthBuild Programs

YouthBuild's success is rooted in the integration of alternative schooling, youth, leadership, community and career development, thereby creating a process through which young people can transform their lives.

**Build a safe, positive community of peers & adults**

**Provide individualized attention to serve students**

**Establish high expectations for students and teachers**

**Focus on core academic curriculum**

**Create relevant and tangible service experiences**

**Involve youth in leadership opportunities**

**Make resources & opportunities available to students after graduation**

- Work with leaders who have the vision & ability to move school towards its goals
- Recruit & retain staff that's engaged & can integrate all components of a YouthBuild education, sensitive to the diverse cultures & backgrounds of students
- Build a peer culture with explicit positive values and mutual commitment to each others' success

- Focus on building meaningful relationships with students through contact with teachers, adult mentors, site foremen, and case managers
- Link students to community-based comprehensive support services as needed
- Provide life skills, foster emotional intelligence to remove learning barriers
- Support students with intensive supports for academic and emotional growth

- Prepare students for college and career success
- Expect students to maintain attendance standards and academic excellence
- Track, recognize, and celebrate progress towards these expectations
- Provide students with work experience during their program, including a stipend for on-site work

- Focus on developing students' reading, writing, math, technology, oral communication, and social skills
- Enable students to attain diploma or GED and be college- and career-ready
- Focus on a culture of academic inquiry, in-depth learning, and performance assessment

- Create a project-based learning bridge to communities by building affordable housing and other community development activities
- Motivate and reward students to revitalize their local community

- Integrate student voice through a functioning policy committee
- Provide many opportunities within the program for student leadership
- Empower students to be advocates for their YB programs in national, state, and local efforts
- Engage students in leadership development surrounding social issues
- Enable all students to recognize and act upon opportunities to effect change

- Provide opportunities to students after they graduate to increase their success in college and help bolster career-building skills
- Create & maintain partnerships with higher education institutions
- Support students financially through asset building efforts, access to college scholarships & by providing financial skills to help break the cycle of poverty
- Provide an alumni organization to link students in career and leadership networks

# PSE Pathways: Systems Alignment

Low-income young adults are supported to and through PSE

<b>YouthBuild Program Efforts</b>	<b>Shared Delivery</b>	<b>Community Colleges and other PSE institutions</b>
<b>Quality Academic Offerings</b>	<b>Dual Enrollment</b>	<b>Course Development</b>
<b>Individual mentoring and counseling</b>	<b>Quality Developmental Ed</b>	<b>Providing space &amp; resources</b>
<b>Economic incentives and resources (i.e. tuition support, book and transportation vouchers, FAFSA etc.)</b>	<b>Tutoring</b>	<b>Academic advisement</b>
<b>Individual counseling</b>	<b>Data Collection and Response</b>	<b>Registration Support</b>
<b>Peer and cohort supports</b>	<b>Accountability for retention/ completion</b>	<b>Dedicated liaison(s) to YB students and staff</b>
<b>Supporting students when life circumstances require</b>	<b>Internships and work studies</b>	<b>Work study placements</b>

# Postsecondary Partnerships

- **Meaningful, sustainable, formal and mutually accountable**
- **Strengthened with formal agreements (MOUs, articulation and data sharing agreements)**
- **Dedicated staff, facilities, resources, course & credit alignment, real time reporting on student performance/progression**
- **Timeline and process to review and recommit to partnership agreements to ensure integrated and effective services**

# Participating Sites and Partners

**Metro Atlanta YouthBuild (GA)**

**Atlanta Technical College and  
Kennesaw State University**

**YouthBuild Brockton (MA)**

**Massasoit Community College**

**YouthBuild Columbus (OH)**

**Columbus State Community  
College**

**YouthBuild McLean (IL)**

**Heartland Community College**

**Operation Fresh Start (WI)**

**Madison Area Technical College**

**YouthBuild Philadelphia (PA)**

**Community College of  
Philadelphia**

**Portland YouthBuilders (OR)**

**Portland Community College**

# Academic Rigor & Preparation

- **Instructional rigor improves academic content knowledge, skills and behaviors**
- **Relevant instruction includes experiential and project-based learning**
- **Technology integrated throughout the curriculum**
- **Focus on deepening critical thinking skills**
- **Strong culture of reading, writing and numeracy**
- **Meaningful assessment helps drive instruction & readiness**

# Meaningful Student Supports

- **Expanded staffing capacity for transition and graduate support**
- **Early and consistent exposure to postsecondary setting (tours, visits, class shadows, dual credit, speakers)**
- **Academic advising, financial-aid support, and full range of counseling and guidance services (sending and receiving)**
  - **financial-aid includes ed-awards, IDA's, scholarships, grants,**
  - **loans, incentives, emergency supports, & financial literacy**
- **Alumni/cohort support models to improve transition and retention**