

March 28th, 2017

Longworth House Office Building
Washington, DC 20515

Dear Representative,

Enclosed please find a packet detailing a fiscally responsible approach to unlocking the human potential of disconnected youth (16-24 year olds who are not in school and can't find a job). **On average, there are 11,315 disconnected youth in each congressional district.** (Calculations specific to your district appear at the end of this packet.) These young people are also known as "opportunity youth," because they are both seeking opportunities to provide for themselves and their families, and because their talents offer a tremendous opportunity to revitalize your district. When we support opportunity youth's well-being, we help them reach their potential and fully contribute to their communities. In your packet, you will find (along with citations and methodologies for each calculation):

- ***A line item budget of the \$179,537,386 of annual cost savings available, on average, by helping reconnect the opportunity youth in a single district.*** This is far more expensive than the cost of comprehensive programs that could proactively help disconnected youth get a new lease on life and a viable pathway toward an education and career that provide family-sustaining wages.
- ***A fiscal analysis of the lifetime return on investment of reconnecting opportunity youth in your district.*** Once reconnected, each young person in your district will **save taxpayers \$65,230** (more than double the cost of the programs that helped the young person reconnect). Each reconnected young person in your district will also **generate approximately \$105,500 in new tax revenue** (more than triple the cost of programs that helped the young person reconnect).
- ***A list of existing federal funding streams available to help opportunity youth in your district connect to education and jobs.*** Well-being is built. It is strengthened by materials like social relationships, community resources, and opportunities to thrive. Most effective programs that support the well-being of opportunity youth have waiting lists, meaning the odds are that there are young people in your district who are knocking on the door to transform their lives and yet are being turned away. **In FY15, federal programs reached only 339,719 opportunity youth across the country, a mere 7% of the country's 4,900,000 opportunity youth. And this was 100,000 less opportunity youth than were served in FY12,** due to subsequent federal budget cuts. As you see from the line item budget of the cost-savings these programs would have returned to your district, these cuts turned out to be a costly mistake.
- ***A federal appropriations plan to ensure that federally supported programs reach one million disconnected youth each year.*** This plan would: **approximately triple the opportunities to reconnect young people in each district; reduce the number of opportunity youth in each district by, on average, 1,471; and cut the cost of disconnection in each district by an average of \$23,339,860 each year.**

The benefits to your district are greater than just the money taxpayers will save. Opportunity youth are creative, determined, resilient, and entrepreneurial. When we show them that the community cares about them and is committed to their success, we find they are eager to give back. By supporting their well-being, we can help opportunity youth reach their potential and fully contribute to our communities. In turn, maximizing their potential helps your district to thrive and remain vibrant.

For more information, contact Thaddeus Ferber, Opportunity Youth Network, at thaddeus@forumfyi.org.

Congressional District

Date
March 28, 2017

To
Congressperson

Description: This line item budget details the \$179,537,386 of annual expenses that could be prevented by helping reconnect the, on average, 11,315 opportunity youth (16-24 year olds who are not in school and can't find a job) living in each district.

Number Of Opportunity Youth, On Average, in a District	Description ¹	Annual Total
11,315 ²	Lost tax revenue from disconnected youth (Federal, FICA and State) ³	\$19,008,530
11,315	Government healthcare expenditures for disconnected youth (Medicare, Medicaid, CHIP, DoD, DVA) ⁴	\$26,928,750
11,315	Governmental crime expenditures for disconnected youth (juvenile corrections, police protection, judicial and legal expenses) ⁵	\$129,526,850
11,315	Welfare expenditures for disconnected youth: (Supplemental Security Income, Public Assistance, TANF, Housing Assistance, WIC, SNAP) ⁶	\$4,073,256
	Annual Total Savings	\$179,537,386

¹ Belfield, C, Levin, H, and Rosen, R., (2012) *The Economic Value of Opportunity Youth*, City University of New York: New York. Belfield estimates the full economic benefit of reconnecting an opportunity youth is \$51,350. However, to ensure a high level of confidence in the possible cost savings included in your invoice, our analysis only includes a subset of the types of costs that Belfield includes in his calculations. For example, we do not include lost earnings, crime victim costs, private health expenditures, productivity spillovers, and marginal excess tax burdens.

² Burd-Sharps, S., and Lewis, K. (2017) *Promising Gains, Persistent Gaps: Youth Disconnection in America*. Measure of America: Brooklyn, NY.

³ Belfield et. al., *The Economic Value of Opportunity Youth* uses Current Population Survey data to calculate that the average working youth contributes \$2,430 in taxes, while the average opportunity youth contributes \$750 in taxes. The paper notes that this is a conservative estimate of the tax gap because it does not include consumption taxes.

⁴ Belfield et. al., *The Economic Value of Opportunity Youth* uses National Longitudinal Study of Adolescent to Adult Health (Add Health) data to calculate that 27.8% of opportunity youth are on Medicaid, compared to 5.3% of the entire cohort. The paper uses these proportions – in conjunction with the public expenditures – to estimate that the average opportunity youth imposes an annual public health burden of \$3,490; by comparison, the average youth imposes an annual burden of \$1,110. The paper notes that this is a conservative estimate of the gap because it does not include the cost of health care in schools, and because it assumes that all health cases are equally costly, when, in fact, it is likely that more disadvantaged persons require more intensive care, especially for psychological or mental treatments.

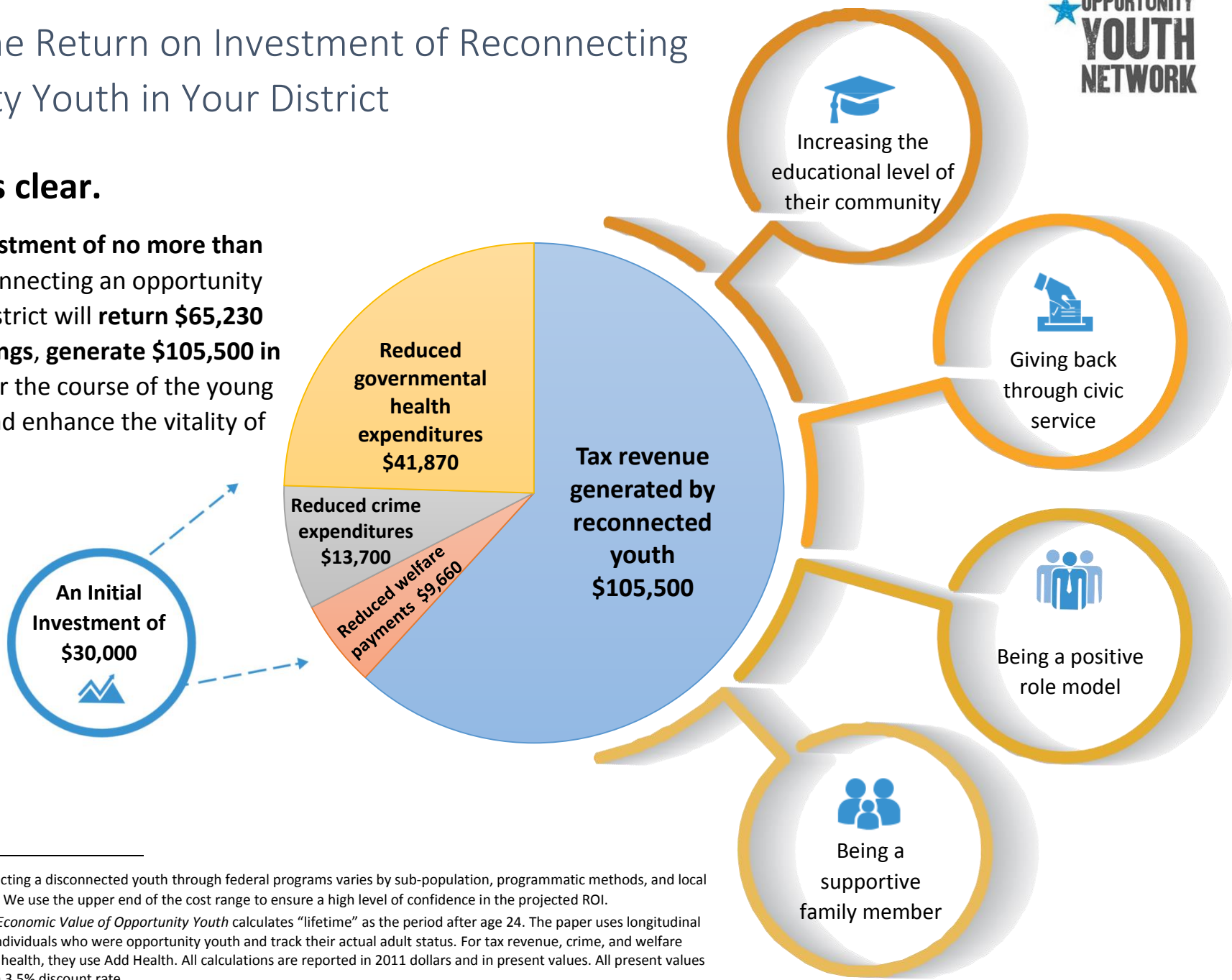
⁵ Belfield et. al., *The Economic Value of Opportunity Youth* uses National Longitudinal Survey of Youth 1997 (NLSY97) data to estimate that opportunity youth account for 63% of all youth crime, which they report is in line with the well-established correlation between crime and disadvantage or low education.

⁶ Belfield et. al., *The Economic Value of Opportunity Youth* uses Current Population Survey data to calculate that opportunity youth receive \$280 more than other youth for supplemental security income and public assistance, and an additional \$80 for direct payments through programs like Special Supplemental Nutrition Program for Women, Infants and Children (WIC) and Supplemental Nutrition Assistance Program (SNAP).

The Lifetime Return on Investment of Reconnecting Opportunity Youth in Your District

The math is clear.

A one-time investment of no more than **\$30,000⁷** in reconnecting an opportunity youth in your district will **return \$65,230 in taxpayer savings, generate \$105,500 in tax revenue** over the course of the young person’s life,⁸ and enhance the vitality of your district.



⁷ The cost of reconnecting a disconnected youth through federal programs varies by sub-population, programmatic methods, and local economic conditions. We use the upper end of the cost range to ensure a high level of confidence in the projected ROI.

⁸ Belfield et. al., *The Economic Value of Opportunity Youth* calculates “lifetime” as the period after age 24. The paper uses longitudinal datasets to identify individuals who were opportunity youth and track their actual adult status. For tax revenue, crime, and welfare they use NLSY97. For health, they use Add Health. All calculations are reported in 2011 dollars and in present values. All present values are calculated using a 3.5% discount rate.

Existing Federal Funding Streams That Help Opportunity Youth in Your District Reconnect to Education and Jobs



Well-being is built. Just as building a strong house requires a variety of materials, building well-being requires community resources, social relationships, and opportunities to thrive. To build well-being in your district depends on many people working together, just as building a house does. Comprehensive programs serving opportunity youth work to build well-being, making sure that everyone in the community keeps doing well socially, mentally, financially, physically, and spiritually.

Below is a list of existing federal funding streams that help opportunity youth in your district reconnect to education and jobs.⁹ In 2015 federal programs reached only 7% of the country’s opportunity youth. Due to budget cuts, federal programs reached 100,000 less opportunity youth in 2015 than they did in 2012.

Table 1: Current Federal Funding for Opportunity Youth

Program	Agency	Population Served	Approximate No. of OY Served	Approximate Fed. Cost per OY	Approximate Federal Program Funding for OY in FY 15**
Comprehensive Education and Employment Programs					
Job Corps	Labor	At-risk youth ages 16-24 who are deficient in basic skills, a high school dropout, homeless, a foster child, a parent, or other individual who needs additional training	52,415	\$30,106	\$1,578,000,000
YouthBuild	Labor	Low-income youth who left high school without a diploma, ages 16-24	7,560	\$10,036	\$75,872,160
Service and Conservation Corps	Various	Varies by program, but generally youth ages 16-25	14,778	\$9,900	\$146,302,200
National Guard ChalleNGe Program	Defense	Youth ages 16-18 who are high school dropouts	9,000	\$13,889	\$125,000,000
Reentry Employment Opportunities	Labor	Varies by grant, but generally youth ages 14-24 who have been involved in the justice system	6,130	\$7,300	\$44,749,000
AmeriCorps National Civilian Community Corps	CNCS	Youth ages 18-24	138	\$29,674	\$4,095,012
AmeriCorps State/National	CNCS	Individuals over the age of 17	6,260	\$11,063	\$69,254,380
Subtotals:			96,281		\$2,043,272,752
Short-Term Education Programs					
Adult Secondary Education	Education	Adults over age 16 who do not have a high school diploma or GED, are not enrolled or required to be enrolled in secondary school	132,500	\$298	\$39,485,000
Chafee Education and Training Vouchers	HHS	Current and former foster youth under age 22	16,548	\$2,555	\$42,272,674
Subtotals:			149,048		\$81,757,674
Short-Term Employment Programs					
WIOA Youth Activities	Labor	Low-income youth ages 14-24	94,390	\$3,424	\$323,191,360
Subtotals:			94,390		\$323,191,360
TOTALS:			339,719		\$2,448,221,786

** For programs where actual FY 15 budget or enrollment data was not available, we used the most recent publicly available data.

⁹ Bridgeland, J., Ingram E., and Atwell, M. (2016) *A Bridge to Reconnection: A Plan for Reconnecting One Million Opportunity Youth Each Year Through Federal Funding Streams*. Civic Enterprises: Washington DC.

Join our Campaign to Reach One Million Disconnected Youth



We hope you join our campaign to scale up federal funding to ensure effective programs reach one million opportunity youth each year.

Young people who have experienced first-hand the life-changing transformation through effective programs put it best:

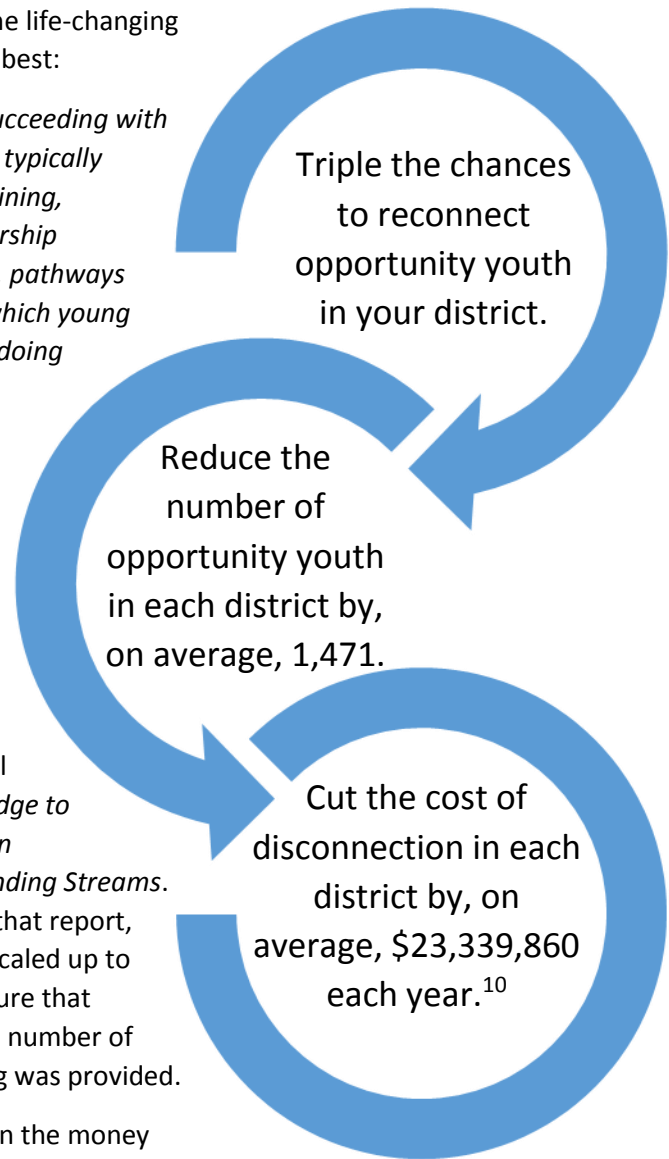
“The comprehensive programs that are already succeeding with opportunity youth should be expanded. These are typically full-time programs that include education, job training, counseling, personal supports and mentors, leadership development opportunities, a positive peer group, pathways to college and jobs, and service opportunities in which young people can learn that it is possible to get paid for doing something good. Every urban and low-income community should have an array of these programs that are well publicized so that young people can see alternatives to the street life.”

— The National Council of Young Leaders
/Opportunity Youth United,
*Recommendations to Increase Opportunity
and Decrease Poverty in America*

George W. Bush’s Domestic Policy Advisor John Bridgeland developed a plan for reaching this goal through the federal appropriations process: *A Bridge to Reconnection: A Plan for Reconnecting One Million Opportunity Youth Each Year Through Federal Funding Streams*. The chart on the following page, excerpted from that report, provides the appropriations levels that could be scaled up to reach this goal. Each level has been vetted to ensure that program providers could responsibly ramp up the number of opportunity youth served if the additional funding was provided.

The benefits to your district are much greater than the money taxpayers will save. Opportunity youth are creative, determined, resilient, and entrepreneurial. When we show them that the community cares about them and is committed to their success, we find they are extremely eager to give back. By supporting their well-being, we can help opportunity youth reach their potential and fully contribute to our communities. In turn, maximizing potential helps your district to thrive and remain vibrant.

For more information, contact Thaddeus Ferber, Opportunity Youth Network, at thaddeus@forumfyi.org.



¹⁰ The plan would create 661,180 new slots for opportunity youth across the country, reaching 13% more opportunity youth. Reducing the 11,315 opportunity youth in an average district by 13% yields a reduction of 1,471.

Table 2: How to Reach One Million Opportunity Youth

Program	Agency	Number of OY Served	Target for Growth	Projected Federal Cost per OY	Cost at Estimate for Growth	Estimated Lifetime Fiscal Savings, by Savings Type				
						Taxes	Crime	Health	Welfare	TOTAL
Comprehensive Education and Employment Programs										
Job Corps	Labor	52,415	65,000	\$30,106	\$1,956,890,000	\$6,857,500,000	\$890,500,000	\$2,721,550,000	\$627,900,000	\$11,097,450,000
YouthBuild	Labor	7,560	50,000	\$15,000	\$750,000,000	\$5,275,000,000	\$685,000,000	\$2,093,500,000	\$483,000,000	\$8,536,500,000
Service and Conservation Corps	Various	14,780	65,000	\$10,000	\$650,000,000	\$6,857,500,000	\$890,500,000	\$2,721,550,000	\$627,900,000	\$11,097,450,000
National Guard Youth Challenge	Defense	9,000	20,000	\$13,890	\$277,800,000	\$2,110,000,000	\$274,000,000	\$837,400,000	\$193,200,000	\$3,414,600,000
Reentry Employment Opportunities	Labor	6,130	18,000	\$7,300	\$131,400,000	\$1,899,000,000	\$246,600,000	\$753,660,000	\$173,880,000	\$3,073,140,000
AmeriCorps National and Civilian Community Corps	CNCS	138	1,400	\$29,674	\$41,543,600	\$147,700,000	\$19,180,000	\$58,618,000	\$13,524,000	\$239,022,000
AmeriCorps State/National	CNCS	6,260	50,000	\$11,063	\$553,150,000	\$5,275,000,000	\$685,000,000	\$2,093,500,000	\$483,000,000	\$8,536,500,000
<i>Subtotals:</i>		<i>96,283</i>	<i>269,400</i>		<i>\$4,360,783,600</i>	<i>\$28,421,700,000</i>	<i>\$3,690,780,000</i>	<i>\$11,279,778,000</i>	<i>\$2,602,404,000</i>	<i>\$45,994,662,000</i>
Short-Term Education Programs										
Adult Secondary Education	Education	132,500	248,700	\$300	\$74,610,000	\$26,237,850,000	\$3,407,190,000	\$10,413,069,000	\$2,402,442,000	\$42,460,551,000
Chafee Education and Training Vouchers	HHS	16,548	26,000	\$2,555	\$66,430,000	\$2,743,000,000	\$356,200,000	\$1,088,620,000	\$251,160,000	\$4,438,980,000
<i>Subtotals:</i>		<i>149,048</i>	<i>274,700</i>		<i>\$141,040,000</i>	<i>\$28,980,850,000</i>	<i>\$3,763,390,000</i>	<i>\$11,501,689,000</i>	<i>\$2,653,602,000</i>	<i>\$46,899,531,000</i>
Short-Term Employment Programs										
WIOA Youth Activities	Labor	94,390	456,801	\$4,424	\$2,020,887,624	\$48,192,505,500	\$6,258,173,700	\$19,126,257,870	\$4,412,697,660	\$77,989,634,730
<i>Subtotals:</i>		<i>94,390</i>	<i>456,801</i>		<i>\$2,020,887,624</i>	<i>\$48,192,505,500</i>	<i>\$6,258,173,700</i>	<i>\$19,126,257,870</i>	<i>\$4,412,697,660</i>	<i>\$77,989,634,730</i>
TOTALS:		339,721	1,000,901		\$6,522,711,224	\$105,595,055,500	\$13,712,343,700	\$41,907,724,870	\$9,668,703,660	\$170,883,827,730

Excerpted from Bridgeland, J., Ingram E., and Atwell, M. (2016) *A Bridge to Reconnection: A Plan for Reconnecting One Million Opportunity Youth Each Year Through Federal Funding Streams*. Civic Enterprises: Washington DC.

District Representative	Opportunity Youth	Annual Cost Savings by Reconnecting Opportunity Youth in Each District					If Appropriations Increased to Reach 1M Opportunity Youth		
		Number in Each District	Increased Tax Revenue	Reduced Crime Costs	Reduced Public Health Costs	Reduced Welfare Costs	TOTAL	Youth Reconnected	Cost Savings From Reconnection
AK 0 Young	14,270	\$ 23,973,600	\$ 163,359,552	\$ 33,962,600	\$ 5,137,200	\$ 226,432,952	1,855	\$ 29,436,284	
AL 1 Byrne	12,137	\$ 20,389,958	\$ 138,940,104	\$ 28,885,774	\$ 4,369,277	\$ 192,585,113	1,578	\$ 25,036,065	
AL 2 Roby	16,693	\$ 28,044,228	\$ 191,097,397	\$ 39,729,323	\$ 6,009,477	\$ 264,880,427	2,170	\$ 34,434,455	
AL 3 Rogers	13,652	\$ 22,935,397	\$ 156,285,088	\$ 32,491,812	\$ 4,914,728	\$ 216,627,025	1,775	\$ 28,161,513	
AL 4 Aderholt	13,341	\$ 22,412,317	\$ 152,720,747	\$ 31,750,783	\$ 4,802,639	\$ 211,686,486	1,734	\$ 27,519,243	
AL 5 Brooks	11,517	\$ 19,347,786	\$ 131,838,588	\$ 27,409,363	\$ 4,145,954	\$ 182,741,691	1,497	\$ 23,756,420	
AL 6 Palmer	8,491	\$ 14,264,712	\$ 97,201,796	\$ 20,208,342	\$ 3,056,724	\$ 134,731,574	1,104	\$ 17,515,105	
AL 7 Sewell	15,072	\$ 25,320,120	\$ 172,534,933	\$ 35,870,170	\$ 5,425,740	\$ 239,150,963	1,959	\$ 31,089,625	
AR 1 Crawford	15,893	\$ 26,700,613	\$ 181,941,810	\$ 37,825,868	\$ 5,721,560	\$ 252,189,851	2,066	\$ 32,784,681	
AR 2 Hill	14,128	\$ 23,734,504	\$ 161,730,318	\$ 33,623,881	\$ 5,085,965	\$ 224,174,668	1,837	\$ 29,142,707	
AR 3 Womack	12,286	\$ 20,640,378	\$ 140,646,496	\$ 29,240,535	\$ 4,422,938	\$ 194,950,346	1,597	\$ 25,343,545	
AR 4 Westerman	16,207	\$ 27,228,025	\$ 185,535,674	\$ 38,573,036	\$ 5,834,577	\$ 257,171,313	2,107	\$ 33,432,271	
AZ 1 O'Halleran	20,457	\$ 34,367,585	\$ 234,185,660	\$ 48,687,412	\$ 7,364,483	\$ 324,605,140	2,659	\$ 42,198,668	
AZ 2 McSally	15,723	\$ 26,415,236	\$ 179,997,213	\$ 37,421,585	\$ 5,660,408	\$ 249,494,442	2,044	\$ 32,434,278	
AZ 3 Grijalva	18,283	\$ 30,715,242	\$ 209,298,067	\$ 43,513,259	\$ 6,581,838	\$ 290,108,406	2,377	\$ 37,714,093	
AZ 4 Gosar	13,581	\$ 22,815,643	\$ 155,469,068	\$ 32,322,161	\$ 4,889,066	\$ 215,495,939	1,765	\$ 28,014,472	
AZ 5 Biggs	10,208	\$ 17,149,653	\$ 116,860,200	\$ 24,295,342	\$ 3,674,926	\$ 161,980,121	1,327	\$ 21,057,416	
AZ 6 Schweikert	6,792	\$ 11,410,189	\$ 77,750,664	\$ 16,164,434	\$ 2,445,040	\$ 107,770,327	883	\$ 14,010,143	
AZ 7 Gallego	22,244	\$ 37,369,848	\$ 254,643,508	\$ 52,940,618	\$ 8,007,825	\$ 352,961,798	2,892	\$ 45,885,034	
AZ 8 Franks	9,563	\$ 16,065,128	\$ 109,470,086	\$ 22,758,931	\$ 3,442,527	\$ 151,736,672	1,243	\$ 19,725,767	
AZ 9 Sinema	8,658	\$ 14,546,253	\$ 99,120,257	\$ 20,607,192	\$ 3,117,054	\$ 137,390,756	1,126	\$ 17,860,798	
CA 1 LaMalfa	12,925	\$ 21,713,782	\$ 147,960,825	\$ 30,761,191	\$ 4,652,953	\$ 205,088,751	1,680	\$ 26,661,538	
CA 2 Huffman	9,217	\$ 15,484,661	\$ 105,514,702	\$ 21,936,603	\$ 3,318,142	\$ 146,254,107	1,198	\$ 19,013,034	
CA 3 Garamendi	12,767	\$ 21,448,091	\$ 146,150,373	\$ 30,384,796	\$ 4,596,020	\$ 202,579,280	1,660	\$ 26,335,306	
CA 4 McClintock	9,098	\$ 15,284,440	\$ 104,150,369	\$ 21,652,957	\$ 3,275,237	\$ 144,363,003	1,183	\$ 18,767,190	
CA 5 Thompson	10,770	\$ 18,093,494	\$ 123,291,667	\$ 25,632,450	\$ 3,877,177	\$ 170,894,788	1,400	\$ 22,216,322	
CA 6 Matsui	14,154	\$ 23,779,242	\$ 162,035,172	\$ 33,687,260	\$ 5,095,552	\$ 224,597,227	1,840	\$ 29,197,639	
CA 7 Bera	12,164	\$ 20,435,374	\$ 139,249,571	\$ 28,950,113	\$ 4,379,009	\$ 193,014,067	1,581	\$ 25,091,829	
CA 8 Cook	21,413	\$ 35,973,272	\$ 245,127,041	\$ 50,962,136	\$ 7,708,558	\$ 339,771,007	2,784	\$ 44,170,231	
CA 9 McNerney	16,413	\$ 27,573,507	\$ 187,889,838	\$ 39,062,469	\$ 5,908,609	\$ 260,434,423	2,134	\$ 33,856,475	
CA 10 Denham	15,016	\$ 25,227,609	\$ 171,904,550	\$ 35,739,113	\$ 5,405,916	\$ 238,277,189	1,952	\$ 30,976,035	
CA 11 DeSaulnier	9,976	\$ 16,758,974	\$ 114,198,058	\$ 23,741,880	\$ 3,591,209	\$ 158,290,121	1,297	\$ 20,577,716	
CA 13 Lee	6,601	\$ 11,089,707	\$ 75,566,855	\$ 15,710,418	\$ 2,376,366	\$ 104,743,346	858	\$ 13,616,635	
CA 14 Speier	5,843	\$ 9,816,558	\$ 66,891,432	\$ 13,906,790	\$ 2,103,548	\$ 92,718,328	760	\$ 12,053,383	
CA 15 Swalwell	5,996	\$ 10,073,787	\$ 68,644,233	\$ 14,271,199	\$ 2,158,669	\$ 95,147,888	780	\$ 12,369,225	
CA 16 Costa	15,898	\$ 26,709,369	\$ 182,001,476	\$ 37,838,273	\$ 5,723,436	\$ 252,272,554	2,067	\$ 32,795,432	
CA 17 Khanna	7,487	\$ 12,578,787	\$ 85,713,658	\$ 17,819,948	\$ 2,695,454	\$ 118,807,847	973	\$ 15,445,020	
CA 18 Eshoo	7,604	\$ 12,774,668	\$ 87,048,421	\$ 18,097,446	\$ 2,737,429	\$ 120,657,964	989	\$ 15,685,535	
CA 19 Lofgren	9,015	\$ 15,145,563	\$ 103,204,040	\$ 21,456,214	\$ 3,245,478	\$ 143,051,295	1,172	\$ 18,596,668	
CA 20 Panetta	12,952	\$ 21,758,942	\$ 148,268,552	\$ 30,825,167	\$ 4,662,630	\$ 205,515,292	1,684	\$ 26,716,988	
CA 21 Valadao	19,442	\$ 32,663,061	\$ 222,570,785	\$ 46,272,669	\$ 6,999,227	\$ 308,505,742	2,527	\$ 40,105,746	
CA 22 Nunes	14,553	\$ 24,448,835	\$ 166,597,872	\$ 34,635,850	\$ 5,239,036	\$ 230,921,593	1,892	\$ 30,019,807	
CA 23 McCarthy	18,912	\$ 31,772,610	\$ 216,503,128	\$ 45,011,198	\$ 6,808,416	\$ 300,095,352	2,459	\$ 39,012,396	
CA 24 Carbajal	10,215	\$ 17,161,822	\$ 116,943,116	\$ 24,312,581	\$ 3,677,533	\$ 162,095,052	1,328	\$ 21,072,357	
CA 25 Knight	11,757	\$ 19,752,526	\$ 134,596,549	\$ 27,982,745	\$ 4,232,684	\$ 186,564,504	1,528	\$ 24,253,386	
CA 26 Brownley	10,039	\$ 16,864,956	\$ 114,920,228	\$ 23,892,020	\$ 3,613,919	\$ 159,291,123	1,305	\$ 20,707,846	
CA 27 Chu	7,395	\$ 12,424,366	\$ 84,661,414	\$ 17,601,185	\$ 2,662,364	\$ 117,349,330	961	\$ 15,255,413	
CA 28 Schiff	8,224	\$ 13,816,967	\$ 94,150,795	\$ 19,574,036	\$ 2,960,779	\$ 130,502,577	1,069	\$ 16,965,335	
CA 29 Cárdenas	12,980	\$ 21,806,990	\$ 148,595,958	\$ 30,893,235	\$ 4,672,926	\$ 205,969,110	1,687	\$ 26,775,984	
CA 30 Sherman	8,426	\$ 14,155,927	\$ 96,460,519	\$ 20,054,230	\$ 3,033,413	\$ 133,704,088	1,095	\$ 17,381,531	
CA 31 Aguilar	16,355	\$ 27,477,237	\$ 187,233,835	\$ 38,926,085	\$ 5,887,979	\$ 259,525,136	2,126	\$ 33,738,268	
CA 32 Napolitano	10,798	\$ 18,140,230	\$ 123,610,132	\$ 25,698,659	\$ 3,887,192	\$ 171,336,214	1,404	\$ 22,273,708	
CA 33 Lieu	5,287	\$ 8,881,716	\$ 60,521,291	\$ 12,582,432	\$ 1,903,225	\$ 83,888,664	687	\$ 10,905,526	
CA 34 Becerra	13,154	\$ 22,099,306	\$ 150,587,846	\$ 31,307,351	\$ 4,735,566	\$ 208,730,069	1,710	\$ 27,134,909	
CA 35 Torres	14,923	\$ 25,071,450	\$ 170,840,458	\$ 35,517,887	\$ 5,372,454	\$ 236,802,249	1,940	\$ 30,784,292	
CA 36 Ruiz	16,064	\$ 26,988,251	\$ 183,901,816	\$ 38,233,355	\$ 5,783,197	\$ 254,906,618	2,088	\$ 33,137,860	
CA 37 Bass	9,909	\$ 16,647,488	\$ 113,438,373	\$ 23,583,941	\$ 3,567,319	\$ 157,237,121	1,288	\$ 20,440,826	

District Representative	Opportunity Youth	Annual Cost Savings by Reconnecting Opportunity Youth in Each District					If Appropriations Increased to Reach 1M Opportunity Youth	
	Number in Each District	Increased Tax Revenue	Reduced Crime Costs	Reduced Public Health Costs	Reduced Welfare Costs	TOTAL	Youth Reconnected	Cost Savings From Reconnection
CA 38 Sánchez	12,554	\$ 21,091,466	\$ 143,720,277	\$ 29,879,577	\$ 4,519,600	\$ 199,210,919	1,632	\$ 25,897,420
CA 39 Royce	8,731	\$ 14,667,989	\$ 99,949,785	\$ 20,779,651	\$ 3,143,141	\$ 138,540,566	1,135	\$ 29,010,274
CA 40 Roybal-Allard	14,253	\$ 23,945,048	\$ 163,164,998	\$ 33,922,152	\$ 5,131,082	\$ 226,163,280	1,853	\$ 18,401,226
CA 41 Takano	16,391	\$ 27,537,431	\$ 187,644,009	\$ 39,011,361	\$ 5,900,878	\$ 260,093,678	2,131	\$ 33,812,178
CA 42 Calvert	14,880	\$ 24,998,580	\$ 170,343,911	\$ 35,414,655	\$ 5,356,839	\$ 236,113,984	1,934	\$ 30,694,818
CA 43 Waters	11,149	\$ 18,730,602	\$ 127,633,013	\$ 26,535,020	\$ 4,013,700	\$ 176,912,335	1,449	\$ 22,998,604
CA 44 Barragán	16,738	\$ 28,120,230	\$ 191,615,283	\$ 39,836,992	\$ 6,025,764	\$ 265,598,268	2,176	\$ 34,527,775
CA 45 Walters	7,819	\$ 13,136,589	\$ 89,514,601	\$ 18,610,167	\$ 2,814,983	\$ 124,076,340	1,017	\$ 16,129,924
CA 46 Correa	10,531	\$ 17,692,208	\$ 120,557,243	\$ 25,063,961	\$ 3,791,187	\$ 167,104,599	1,369	\$ 21,723,598
CA 47 Lowenthal	9,917	\$ 16,660,259	\$ 113,525,399	\$ 23,602,034	\$ 3,570,056	\$ 157,357,747	1,289	\$ 20,456,507
CA 48 Rohrabacher	6,156	\$ 10,342,228	\$ 70,473,425	\$ 14,651,489	\$ 2,216,192	\$ 97,683,334	800	\$ 12,698,833
CA 49 Issa	8,405	\$ 14,119,703	\$ 96,213,682	\$ 20,002,912	\$ 3,025,651	\$ 133,361,948	1,093	\$ 17,337,053
CA 50 Hunter	12,006	\$ 20,170,614	\$ 137,445,461	\$ 28,575,037	\$ 4,322,274	\$ 190,513,387	1,561	\$ 24,766,740
CA 51 Vargas	15,326	\$ 25,748,512	\$ 175,454,055	\$ 36,477,058	\$ 5,517,538	\$ 243,197,163	1,992	\$ 31,615,631
CA 53 Davis	8,879	\$ 14,915,989	\$ 101,639,692	\$ 21,130,985	\$ 3,196,283	\$ 140,882,949	1,154	\$ 18,314,783
CO 1 DeGette	11,569	\$ 19,436,152	\$ 132,440,729	\$ 27,534,548	\$ 4,164,890	\$ 183,576,319	1,504	\$ 23,864,921
CO 2 Polis	5,675	\$ 9,533,536	\$ 64,962,885	\$ 13,505,843	\$ 2,042,901	\$ 90,045,165	738	\$ 11,705,871
CO 3 Tipton	11,092	\$ 18,633,812	\$ 126,973,473	\$ 26,397,901	\$ 3,992,960	\$ 175,998,146	1,442	\$ 22,879,759
CO 4 Buck	8,567	\$ 14,392,770	\$ 98,074,401	\$ 20,389,758	\$ 3,084,165	\$ 135,941,094	1,114	\$ 17,672,342
CO 5 Lamborn	11,549	\$ 19,402,639	\$ 132,212,369	\$ 27,487,072	\$ 4,157,708	\$ 183,259,789	1,501	\$ 23,823,773
CO 6 Coffman	8,226	\$ 13,819,305	\$ 94,166,731	\$ 19,577,349	\$ 2,961,280	\$ 130,524,665	1,069	\$ 16,968,206
CO 7 Perlmutter	8,605	\$ 14,456,771	\$ 98,510,515	\$ 20,480,426	\$ 3,097,880	\$ 136,545,592	1,119	\$ 17,750,927
CT 1 Larson	9,409	\$ 15,806,999	\$ 107,711,161	\$ 22,393,249	\$ 3,387,214	\$ 149,298,623	1,223	\$ 19,408,821
CT 2 Courtney	8,800	\$ 14,784,396	\$ 100,743,000	\$ 20,944,562	\$ 3,168,085	\$ 139,640,043	1,144	\$ 18,153,206
CT 3 DeLauro	9,807	\$ 16,476,466	\$ 112,273,002	\$ 23,341,660	\$ 3,530,671	\$ 155,621,798	1,275	\$ 20,230,834
CT 4 Himes	9,183	\$ 15,426,973	\$ 105,121,609	\$ 21,854,878	\$ 3,305,780	\$ 145,709,240	1,194	\$ 18,942,201
CT 5 Esty	7,696	\$ 12,928,766	\$ 88,098,467	\$ 18,315,752	\$ 2,770,450	\$ 122,113,435	1,000	\$ 15,874,746
DC 98 Norton	8,753	\$ 14,705,040	\$ 100,202,254	\$ 20,832,140	\$ 3,151,080	\$ 138,890,514	1,138	\$ 18,055,767
DE 0 Blunt Rochester	14,006	\$ 23,530,080	\$ 160,337,343	\$ 33,334,280	\$ 5,042,160	\$ 222,243,863	1,821	\$ 28,891,702
FL 1 Gaetz	8,929	\$ 15,000,841	\$ 102,217,884	\$ 21,251,191	\$ 3,214,466	\$ 141,684,382	1,161	\$ 18,418,970
FL 2 Dunn	13,151	\$ 22,093,482	\$ 150,548,157	\$ 31,299,099	\$ 4,734,318	\$ 208,675,055	1,710	\$ 27,127,757
FL 3 Yoho	15,443	\$ 25,943,768	\$ 176,784,559	\$ 36,753,671	\$ 5,559,379	\$ 245,041,377	2,008	\$ 31,855,379
FL 4 Rutherford	9,613	\$ 16,150,334	\$ 110,050,694	\$ 22,879,640	\$ 3,460,786	\$ 152,541,453	1,250	\$ 19,830,389
FL 5 Lawson	15,116	\$ 25,394,875	\$ 173,044,324	\$ 35,976,073	\$ 5,441,759	\$ 239,857,031	1,965	\$ 31,181,414
FL 6 DeSantis	9,425	\$ 15,833,780	\$ 107,893,650	\$ 22,431,188	\$ 3,392,953	\$ 149,551,571	1,225	\$ 19,441,704
FL 7 Murphy	9,835	\$ 16,522,832	\$ 112,588,949	\$ 23,407,345	\$ 3,540,607	\$ 156,059,733	1,279	\$ 20,287,765
FL 8 Posey	9,626	\$ 16,171,033	\$ 110,191,742	\$ 22,908,964	\$ 3,465,221	\$ 152,736,960	1,251	\$ 19,855,805
FL 9 Soto	11,979	\$ 20,124,122	\$ 137,128,656	\$ 28,509,173	\$ 4,312,312	\$ 190,074,262	1,557	\$ 24,709,654
FL 10 Demings	13,406	\$ 22,521,904	\$ 153,467,485	\$ 31,906,030	\$ 4,826,122	\$ 212,721,540	1,743	\$ 27,653,800
FL 11 Webster	13,420	\$ 22,545,607	\$ 153,629,001	\$ 31,939,610	\$ 4,831,201	\$ 212,945,419	1,745	\$ 27,682,904
FL 12 Bilirakis	8,849	\$ 14,866,312	\$ 101,301,182	\$ 21,060,608	\$ 3,185,638	\$ 140,413,739	1,150	\$ 18,253,786
FL 13 Crist	8,309	\$ 13,959,261	\$ 95,120,409	\$ 19,775,620	\$ 2,991,270	\$ 131,846,561	1,080	\$ 17,140,053
FL 14 Castor	12,263	\$ 20,602,310	\$ 140,387,101	\$ 29,186,606	\$ 4,414,781	\$ 194,590,798	1,594	\$ 25,296,804
FL 15 Ross	12,905	\$ 21,681,033	\$ 147,737,674	\$ 30,714,797	\$ 4,645,936	\$ 204,779,440	1,678	\$ 26,621,327
FL 16 Buchanan	7,824	\$ 13,145,002	\$ 89,571,931	\$ 18,622,086	\$ 2,816,786	\$ 124,155,806	1,017	\$ 16,140,255
FL 17 Rooney	13,942	\$ 23,422,101	\$ 159,601,561	\$ 33,181,310	\$ 5,019,022	\$ 221,223,995	1,812	\$ 28,759,119
FL 18 Mast	7,411	\$ 12,450,572	\$ 84,839,988	\$ 17,638,311	\$ 2,667,980	\$ 117,596,851	963	\$ 15,287,591
FL 19 Rooney	9,284	\$ 15,596,851	\$ 106,279,183	\$ 22,095,539	\$ 3,342,182	\$ 147,313,756	1,207	\$ 19,150,788
FL 20 Hastings	11,636	\$ 19,547,946	\$ 133,202,509	\$ 27,692,923	\$ 4,188,846	\$ 184,632,223	1,513	\$ 24,002,189
FL 21 Frankel	7,582	\$ 12,737,377	\$ 86,794,315	\$ 18,044,617	\$ 2,729,438	\$ 120,305,748	986	\$ 15,639,747
FL 22 Deutch	9,937	\$ 16,694,563	\$ 113,759,150	\$ 23,650,631	\$ 3,577,406	\$ 157,681,751	1,292	\$ 20,498,628
FL 23 Wasserman Schultz	6,910	\$ 11,608,812	\$ 79,104,110	\$ 16,445,817	\$ 2,487,603	\$ 109,646,341	898	\$ 14,254,024
FL 24 Wilson	12,840	\$ 21,571,766	\$ 146,993,112	\$ 30,560,002	\$ 4,622,521	\$ 203,747,401	1,669	\$ 26,487,162
FL 25 Diaz-Balart	11,811	\$ 19,842,366	\$ 135,208,729	\$ 28,110,018	\$ 4,251,936	\$ 187,413,048	1,535	\$ 24,363,696
FL 26 Curbelo	9,427	\$ 15,837,140	\$ 107,916,545	\$ 22,435,948	\$ 3,393,673	\$ 149,583,306	1,225	\$ 19,445,830
FL 27 Ros-Lehtinen	10,350	\$ 17,388,544	\$ 118,488,037	\$ 24,633,771	\$ 3,726,117	\$ 164,236,470	1,346	\$ 21,350,741
GA 1 Carter	15,165	\$ 25,476,375	\$ 173,599,678	\$ 36,091,531	\$ 5,459,223	\$ 240,626,807	1,971	\$ 31,281,485

District Representative	Opportunity Youth	Annual Cost Savings by Reconnecting Opportunity Youth in Each District					If Appropriations Increased to Reach 1M Opportunity Youth	
		Number in Each District	Increased Tax Revenue	Reduced Crime Costs	Reduced Public Health Costs	Reduced Welfare Costs	TOTAL	Youth Reconnected
GA 2 Bishop	19,398	\$ 32,589,038	\$ 222,066,385	\$ 46,167,804	\$ 6,983,365	\$ 307,806,592	2,522	\$ 40,014,857
GA 3 Ferguson	16,156	\$ 27,142,455	\$ 184,952,583	\$ 38,451,811	\$ 5,816,240	\$ 256,363,088	2,100	\$ 33,327,201
GA 4 Johnson	17,256	\$ 28,990,109	\$ 197,542,762	\$ 41,069,320	\$ 6,212,166	\$ 273,814,357	2,243	\$ 35,595,866
GA 5 Lewis	13,897	\$ 23,346,656	\$ 159,087,465	\$ 33,074,429	\$ 5,002,855	\$ 220,511,405	1,807	\$ 28,666,483
GA 6 Price	7,097	\$ 11,923,237	\$ 81,246,650	\$ 16,891,253	\$ 2,554,979	\$ 112,616,119	923	\$ 14,640,096
GA 7 Woodall	13,588	\$ 22,827,158	\$ 155,547,531	\$ 32,338,474	\$ 4,891,534	\$ 215,604,697	1,766	\$ 28,028,611
GA 8 Scott	19,391	\$ 32,576,107	\$ 221,978,271	\$ 46,149,485	\$ 6,980,594	\$ 307,684,458	2,521	\$ 39,998,980
GA 9 Collins	14,300	\$ 24,023,236	\$ 163,697,776	\$ 34,032,917	\$ 5,147,836	\$ 226,901,765	1,859	\$ 29,497,229
GA 10 Hice	15,822	\$ 26,580,995	\$ 181,126,718	\$ 37,656,410	\$ 5,695,928	\$ 251,060,051	2,057	\$ 32,637,807
GA 11 Loudermilk	8,429	\$ 14,160,658	\$ 96,492,756	\$ 20,060,932	\$ 3,034,427	\$ 133,748,772	1,096	\$ 17,387,340
GA 12 Allen	18,146	\$ 30,484,875	\$ 207,728,316	\$ 43,186,906	\$ 6,532,473	\$ 287,932,570	2,359	\$ 37,431,234
GA 13 Scott	12,522	\$ 21,037,451	\$ 143,352,208	\$ 29,803,055	\$ 4,508,025	\$ 198,700,739	1,628	\$ 25,831,096
GA 14 Graves	12,078	\$ 20,291,058	\$ 138,266,186	\$ 28,745,666	\$ 4,348,084	\$ 191,650,994	1,570	\$ 24,914,629
HI 1 Hanabusa	8,757	\$ 14,712,015	\$ 100,249,785	\$ 20,842,022	\$ 3,152,575	\$ 138,956,397	1,138	\$ 18,064,332
HI 2 Gabbard	9,360	\$ 15,724,545	\$ 107,149,305	\$ 22,276,438	\$ 3,369,545	\$ 148,519,833	1,217	\$ 19,307,578
IA 1 Blum	7,007	\$ 11,771,898	\$ 80,215,401	\$ 16,676,855	\$ 2,522,550	\$ 111,186,704	911	\$ 14,454,271
IA 2 Loeb sack	8,439	\$ 14,177,881	\$ 96,610,118	\$ 20,085,332	\$ 3,038,117	\$ 133,911,448	1,097	\$ 17,408,488
IA 3 Young	6,920	\$ 11,625,652	\$ 79,218,862	\$ 16,469,674	\$ 2,491,211	\$ 109,805,399	900	\$ 14,274,702
IA 4 King	8,560	\$ 14,380,094	\$ 97,988,028	\$ 20,371,800	\$ 3,081,449	\$ 135,821,371	1,113	\$ 17,656,778
ID 1 Labrador	11,953	\$ 20,081,117	\$ 136,835,616	\$ 28,448,249	\$ 4,303,097	\$ 189,668,079	1,554	\$ 24,656,850
ID 2 Simpson	12,037	\$ 20,222,083	\$ 137,796,175	\$ 28,647,951	\$ 4,333,303	\$ 190,999,512	1,565	\$ 24,829,937
IL 1 Rush	17,393	\$ 29,219,907	\$ 199,108,644	\$ 41,394,869	\$ 6,261,409	\$ 275,984,829	2,261	\$ 35,878,028
IL 2 Kelly	16,696	\$ 28,049,529	\$ 191,133,515	\$ 39,736,832	\$ 6,010,613	\$ 264,930,489	2,170	\$ 34,440,964
IL 3 Lipinski	12,678	\$ 21,299,697	\$ 145,139,192	\$ 30,174,571	\$ 4,564,221	\$ 201,177,681	1,648	\$ 26,153,098
IL 4 Gutiérrez	15,442	\$ 25,942,580	\$ 176,776,466	\$ 36,751,989	\$ 5,559,124	\$ 245,030,159	2,007	\$ 31,853,921
IL 5 Quigley	6,713	\$ 11,277,291	\$ 76,845,077	\$ 15,976,162	\$ 2,416,562	\$ 106,515,092	873	\$ 13,846,962
IL 6 Roskam	6,024	\$ 10,120,888	\$ 68,965,183	\$ 14,337,924	\$ 2,168,762	\$ 95,592,757	783	\$ 12,427,058
IL 7 Davis	16,783	\$ 28,194,877	\$ 192,123,941	\$ 39,942,743	\$ 6,041,759	\$ 266,303,320	2,182	\$ 34,619,432
IL 8 Krishnamoorthi	6,282	\$ 10,553,683	\$ 71,914,309	\$ 14,951,051	\$ 2,261,503	\$ 99,680,546	817	\$ 12,958,471
IL 9 Schakowsky	5,434	\$ 9,129,199	\$ 62,207,672	\$ 12,933,032	\$ 1,956,257	\$ 86,226,160	706	\$ 11,209,401
IL 10 Schneider	5,361	\$ 9,006,955	\$ 61,374,687	\$ 12,759,854	\$ 1,930,062	\$ 85,071,558	697	\$ 11,059,303
IL 11 Foster	8,809	\$ 14,799,399	\$ 100,845,229	\$ 20,965,815	\$ 3,171,300	\$ 139,781,742	1,145	\$ 18,171,627
IL 12 Bost	13,882	\$ 23,321,004	\$ 158,912,669	\$ 33,038,089	\$ 4,997,358	\$ 220,269,120	1,805	\$ 28,634,986
IL 13 Davis	10,118	\$ 16,998,798	\$ 115,832,248	\$ 24,081,630	\$ 3,642,600	\$ 160,555,276	1,315	\$ 20,872,186
IL 14 Hultgren	6,713	\$ 11,277,907	\$ 76,849,279	\$ 15,977,035	\$ 2,416,694	\$ 106,520,916	873	\$ 13,847,719
IL 15 Shimkus	12,441	\$ 20,900,520	\$ 142,419,147	\$ 29,609,071	\$ 4,478,683	\$ 197,407,421	1,617	\$ 25,662,965
IL 16 Kinzinger	10,331	\$ 17,355,761	\$ 118,264,646	\$ 24,587,328	\$ 3,719,092	\$ 163,926,826	1,343	\$ 21,310,487
IL 17 Bustos	9,578	\$ 16,091,295	\$ 109,648,397	\$ 22,796,002	\$ 3,448,135	\$ 151,983,829	1,245	\$ 19,757,898
IL 18 LaHood	10,222	\$ 17,173,299	\$ 117,021,327	\$ 24,328,841	\$ 3,679,993	\$ 162,203,460	1,329	\$ 21,086,450
IN 1 Visclosky	13,272	\$ 22,296,621	\$ 151,932,374	\$ 31,586,879	\$ 4,777,847	\$ 210,593,721	1,725	\$ 27,377,184
IN 2 Walorski	14,476	\$ 24,319,448	\$ 165,716,211	\$ 34,452,552	\$ 5,211,310	\$ 229,699,521	1,882	\$ 29,860,938
IN 3 Banks	9,355	\$ 15,716,007	\$ 107,091,127	\$ 22,264,343	\$ 3,367,716	\$ 148,439,193	1,216	\$ 19,297,095
IN 4 Rokita	9,234	\$ 15,512,512	\$ 105,704,483	\$ 21,976,058	\$ 3,324,110	\$ 146,517,163	1,200	\$ 19,047,231
IN 5 Brooks	7,853	\$ 13,193,062	\$ 89,899,417	\$ 18,690,171	\$ 2,827,085	\$ 124,609,735	1,021	\$ 16,199,266
IN 6 Messer	12,749	\$ 21,418,532	\$ 145,948,950	\$ 30,342,920	\$ 4,589,685	\$ 202,300,087	1,657	\$ 26,299,011
IN 7 Carson	14,068	\$ 23,634,999	\$ 161,052,279	\$ 33,482,916	\$ 5,064,643	\$ 223,234,837	1,829	\$ 29,020,529
IN 8 Bucshon	11,565	\$ 19,429,548	\$ 132,395,728	\$ 27,525,193	\$ 4,163,475	\$ 183,513,943	1,503	\$ 23,856,813
IN 9 Hollingsworth	10,851	\$ 18,229,912	\$ 124,221,237	\$ 25,825,708	\$ 3,906,410	\$ 172,183,266	1,411	\$ 22,383,825
KS 1 Marshall	10,372	\$ 17,425,313	\$ 118,738,583	\$ 24,685,860	\$ 3,733,996	\$ 164,583,751	1,348	\$ 21,395,888
KS 2 Jenkins	9,633	\$ 16,183,391	\$ 110,275,952	\$ 22,926,471	\$ 3,467,870	\$ 152,853,683	1,252	\$ 19,870,979
KS 3 Yoder	7,939	\$ 13,338,007	\$ 90,887,096	\$ 18,895,510	\$ 2,858,144	\$ 125,978,758	1,032	\$ 16,377,239
KS 4 Pompeo	9,586	\$ 16,103,689	\$ 109,732,847	\$ 22,813,559	\$ 3,450,790	\$ 152,100,885	1,246	\$ 19,773,115
KY 1 Comer	12,941	\$ 21,740,833	\$ 148,145,157	\$ 30,799,513	\$ 4,658,750	\$ 205,344,253	1,682	\$ 26,694,753
KY 2 Guthrie	11,627	\$ 19,533,666	\$ 133,105,203	\$ 27,672,693	\$ 4,185,786	\$ 184,497,347	1,512	\$ 23,984,655
KY 3 Yarmuth	7,009	\$ 11,775,772	\$ 80,241,800	\$ 16,682,343	\$ 2,523,380	\$ 111,223,295	911	\$ 14,459,028
KY 4 Massie	14,478	\$ 24,323,539	\$ 165,744,087	\$ 34,458,347	\$ 5,212,187	\$ 229,738,159	1,882	\$ 29,865,961
KY 5 Rogers	17,655	\$ 29,659,923	\$ 202,106,973	\$ 42,018,224	\$ 6,355,698	\$ 280,140,817	2,295	\$ 36,418,306

District Representative	Opportunity Youth		Annual Cost Savings by Reconnecting Opportunity Youth in Each District					If Appropriations Increased to Reach 1M Opportunity Youth	
	Number in Each District	Increased Tax Revenue	Reduced Crime Costs	Reduced Public Health Costs	Reduced Welfare Costs	TOTAL	Youth Reconnected	Cost Savings From Reconnection	
KY 6 Barr	11,894	\$ 19,982,668	\$ 136,164,766	\$ 28,308,779	\$ 4,282,000	\$ 188,738,213	1,546	\$ 24,535,968	
LA 1 Scalise	13,497	\$ 22,674,602	\$ 154,507,994	\$ 32,122,353	\$ 4,858,843	\$ 214,163,793	1,755	\$ 27,841,293	
LA 2 Richmond	14,177	\$ 23,816,878	\$ 162,291,625	\$ 33,740,577	\$ 5,103,617	\$ 224,952,696	1,843	\$ 29,243,851	
LA 3 Higgins	15,995	\$ 26,871,156	\$ 183,103,918	\$ 38,067,472	\$ 5,758,105	\$ 253,800,651	2,079	\$ 32,994,085	
LA 4 Johnson	16,955	\$ 28,483,753	\$ 194,092,384	\$ 40,351,984	\$ 6,103,661	\$ 269,031,782	2,204	\$ 34,974,132	
LA 5 Abraham	22,357	\$ 37,559,177	\$ 255,933,625	\$ 53,208,834	\$ 8,048,395	\$ 354,750,031	2,906	\$ 46,117,504	
LA 6 Graves	13,821	\$ 23,220,113	\$ 158,225,186	\$ 32,895,160	\$ 4,975,739	\$ 219,316,198	1,797	\$ 28,511,106	
MA 1 Neal	10,254	\$ 17,227,217	\$ 117,388,732	\$ 24,405,224	\$ 3,691,547	\$ 162,712,720	1,333	\$ 21,152,654	
MA 2 McGovern	8,216	\$ 13,803,703	\$ 94,060,415	\$ 19,555,246	\$ 2,957,936	\$ 130,377,301	1,068	\$ 16,949,049	
MA 3 Tsongas	10,383	\$ 17,443,734	\$ 118,864,108	\$ 24,711,957	\$ 3,737,943	\$ 164,757,741	1,350	\$ 21,418,506	
MA 4 Kennedy	5,583	\$ 9,378,660	\$ 63,907,539	\$ 13,286,436	\$ 2,009,713	\$ 88,582,348	726	\$ 11,515,705	
MA 6 Moulton	7,785	\$ 13,079,494	\$ 89,125,549	\$ 18,529,283	\$ 2,802,749	\$ 123,537,074	1,012	\$ 16,059,820	
MA 7 Capuano	7,809	\$ 13,118,413	\$ 89,390,748	\$ 18,584,418	\$ 2,811,088	\$ 123,904,667	1,015	\$ 16,107,607	
MA 8 Lynch	7,566	\$ 12,711,038	\$ 86,614,837	\$ 18,007,304	\$ 2,723,794	\$ 120,056,973	984	\$ 15,607,406	
MA 9 Keating	9,361	\$ 15,727,191	\$ 107,167,335	\$ 22,280,187	\$ 3,370,112	\$ 148,544,825	1,217	\$ 19,310,827	
MD 1 Harris	10,708	\$ 17,989,201	\$ 122,581,001	\$ 25,484,702	\$ 3,854,829	\$ 169,909,734	1,392	\$ 22,088,265	
MD 2 Ruppel	8,741	\$ 14,684,856	\$ 100,064,720	\$ 20,803,547	\$ 3,146,755	\$ 138,699,878	1,136	\$ 18,030,984	
MD 3 Sarbanes	10,436	\$ 17,532,351	\$ 119,467,954	\$ 24,837,497	\$ 3,756,932	\$ 165,594,734	1,357	\$ 21,527,315	
MD 4 Brown	10,366	\$ 17,415,423	\$ 118,671,190	\$ 24,671,849	\$ 3,731,876	\$ 164,490,338	1,348	\$ 21,383,744	
MD 5 Hoyer	11,502	\$ 19,323,861	\$ 131,675,561	\$ 27,375,469	\$ 4,140,827	\$ 182,515,718	1,495	\$ 23,727,043	
MD 6 Delaney	10,237	\$ 17,198,556	\$ 117,193,433	\$ 24,364,622	\$ 3,685,405	\$ 162,442,016	1,331	\$ 21,117,462	
MD 7 Cummings	12,205	\$ 20,505,216	\$ 139,725,489	\$ 29,049,057	\$ 4,393,975	\$ 193,673,737	1,587	\$ 25,177,586	
MD 8 Raskin	7,129	\$ 11,976,446	\$ 81,609,224	\$ 16,966,632	\$ 2,566,381	\$ 113,118,683	927	\$ 14,705,429	
ME 1 Pingree	7,367	\$ 12,377,237	\$ 84,340,270	\$ 17,534,419	\$ 2,652,265	\$ 116,904,191	958	\$ 15,197,545	
ME 2 Poliquin	6,784	\$ 11,396,443	\$ 77,656,998	\$ 16,144,961	\$ 2,442,095	\$ 107,640,497	882	\$ 13,993,265	
MI 1 Bergman	11,770	\$ 19,773,795	\$ 134,741,477	\$ 28,012,876	\$ 4,237,242	\$ 186,765,390	1,530	\$ 24,279,501	
MI 2 Huizenga	8,806	\$ 14,794,359	\$ 100,810,885	\$ 20,958,675	\$ 3,170,220	\$ 139,734,139	1,145	\$ 18,165,438	
MI 3 Amash	9,245	\$ 15,531,284	\$ 105,832,400	\$ 22,002,653	\$ 3,328,132	\$ 146,694,469	1,202	\$ 19,070,281	
MI 4 Moolenaar	12,894	\$ 21,662,382	\$ 147,610,581	\$ 30,688,375	\$ 4,641,939	\$ 204,603,276	1,676	\$ 26,598,426	
MI 5 Kildee	15,377	\$ 25,832,856	\$ 176,028,790	\$ 36,596,546	\$ 5,535,612	\$ 243,993,804	1,999	\$ 31,719,194	
MI 6 Upton	9,162	\$ 15,391,357	\$ 104,878,916	\$ 21,804,422	\$ 3,298,148	\$ 145,372,843	1,191	\$ 18,898,470	
MI 7 Walberg	11,739	\$ 19,721,871	\$ 134,387,661	\$ 27,939,317	\$ 4,226,115	\$ 186,274,965	1,526	\$ 24,215,745	
MI 8 Bishop	9,119	\$ 15,320,226	\$ 104,394,218	\$ 21,703,653	\$ 3,282,906	\$ 144,701,002	1,185	\$ 18,811,130	
MI 9 Levin	11,357	\$ 19,079,382	\$ 130,009,648	\$ 27,029,125	\$ 4,088,439	\$ 180,206,594	1,476	\$ 23,426,857	
MI 10 Mitchell	8,261	\$ 13,878,660	\$ 94,571,180	\$ 19,661,435	\$ 2,973,999	\$ 131,085,273	1,074	\$ 17,041,085	
MI 11 Trott	6,249	\$ 10,498,770	\$ 71,540,128	\$ 14,873,258	\$ 2,249,736	\$ 99,161,892	812	\$ 12,891,046	
MI 12 Dingell	11,609	\$ 19,503,587	\$ 132,900,242	\$ 27,630,082	\$ 4,179,340	\$ 184,213,251	1,509	\$ 23,947,723	
MI 13 Conyers	18,843	\$ 31,656,391	\$ 215,711,194	\$ 44,846,554	\$ 6,783,512	\$ 298,997,652	2,450	\$ 38,869,695	
MI 14 Lawrence	17,567	\$ 29,511,720	\$ 201,097,097	\$ 41,808,270	\$ 6,323,940	\$ 278,741,027	2,284	\$ 36,236,334	
MN 1 Walz	4,853	\$ 8,153,183	\$ 55,556,958	\$ 11,550,342	\$ 1,747,111	\$ 77,007,594	631	\$ 10,010,987	
MN 4 McCollum	7,749	\$ 13,018,590	\$ 88,710,545	\$ 18,443,003	\$ 2,789,698	\$ 122,961,836	1,007	\$ 15,985,039	
MN 6 Emmer	6,271	\$ 10,534,700	\$ 71,784,961	\$ 14,924,159	\$ 2,257,436	\$ 99,501,256	815	\$ 12,935,163	
MN 7 Peterson	6,819	\$ 11,456,081	\$ 78,063,383	\$ 16,229,448	\$ 2,454,875	\$ 108,203,787	886	\$ 14,066,492	
MN 8 Nolan	6,546	\$ 10,997,796	\$ 74,940,559	\$ 15,580,211	\$ 2,356,671	\$ 103,875,236	851	\$ 13,503,781	
MO 1 Clay	15,414	\$ 25,894,863	\$ 176,451,315	\$ 36,684,389	\$ 5,548,899	\$ 244,579,467	2,004	\$ 31,795,331	
MO 2 Wagner	6,032	\$ 10,133,446	\$ 69,050,755	\$ 14,355,715	\$ 2,171,453	\$ 95,711,368	784	\$ 12,442,478	
MO 3 Luetkemeyer	8,452	\$ 14,198,772	\$ 96,752,471	\$ 20,114,927	\$ 3,042,594	\$ 134,108,764	1,099	\$ 17,434,139	
MO 4 Hartzler	10,123	\$ 17,006,884	\$ 115,887,346	\$ 24,093,085	\$ 3,644,332	\$ 160,631,647	1,316	\$ 20,882,114	
MO 5 Cleaver	10,519	\$ 17,672,617	\$ 120,423,751	\$ 25,036,208	\$ 3,786,989	\$ 166,919,565	1,368	\$ 21,699,543	
MO 6 Graves	10,351	\$ 17,390,070	\$ 118,498,432	\$ 24,635,932	\$ 3,726,444	\$ 164,250,877	1,346	\$ 21,352,614	
MO 7 Long	11,654	\$ 19,579,419	\$ 133,416,971	\$ 27,737,510	\$ 4,195,590	\$ 184,929,490	1,515	\$ 24,040,834	
MO 8 Smith	13,604	\$ 22,854,250	\$ 155,732,138	\$ 32,376,854	\$ 4,897,339	\$ 215,860,580	1,768	\$ 28,061,875	
MS 1 Kelly	13,919	\$ 23,383,171	\$ 159,336,282	\$ 33,126,159	\$ 5,010,679	\$ 220,856,291	1,809	\$ 28,711,318	
MS 2 Thompson	18,574	\$ 31,204,110	\$ 212,629,285	\$ 44,205,823	\$ 6,686,595	\$ 294,725,813	2,415	\$ 38,314,356	
MS 3 Harper	16,760	\$ 28,157,040	\$ 191,866,115	\$ 39,889,140	\$ 6,033,651	\$ 265,945,947	2,179	\$ 34,572,973	
MS 4 Palazzo	16,698	\$ 28,053,359	\$ 191,159,616	\$ 39,742,259	\$ 6,011,434	\$ 264,966,668	2,171	\$ 34,445,667	
MT 0 Zinke	17,651	\$ 29,653,680	\$ 202,064,433	\$ 42,009,380	\$ 6,354,360	\$ 280,081,853	2,295	\$ 36,410,641	

District Representative	Opportunity Youth	Annual Cost Savings by Reconnecting Opportunity Youth in Each District					If Appropriations Increased to Reach 1M Opportunity Youth	
		Number in Each District	Increased Tax Revenue	Reduced Crime Costs	Reduced Public Health Costs	Reduced Welfare Costs	TOTAL	Youth Reconnected
NC 1 Butterfield	14,366	\$ 24,134,436	\$ 164,455,515	\$ 34,190,452	\$ 5,171,665	\$ 227,952,068	1,868	\$ 29,633,769
NC 2 Holding	11,398	\$ 19,148,196	\$ 130,478,560	\$ 27,126,612	\$ 4,103,185	\$ 180,856,553	1,482	\$ 23,511,352
NC 3 Jones	13,520	\$ 22,714,324	\$ 154,778,665	\$ 32,178,626	\$ 4,867,355	\$ 214,538,970	1,758	\$ 27,890,066
NC 4 Price	9,942	\$ 16,702,345	\$ 113,812,176	\$ 23,661,655	\$ 3,579,074	\$ 157,755,251	1,292	\$ 20,508,183
NC 5 Foxx	11,399	\$ 19,149,813	\$ 130,489,573	\$ 27,128,901	\$ 4,103,531	\$ 180,871,818	1,482	\$ 23,513,336
NC 6 Walker	13,928	\$ 23,399,683	\$ 159,448,802	\$ 33,149,552	\$ 5,014,218	\$ 221,012,255	1,811	\$ 28,731,593
NC 7 Rouzer	14,028	\$ 23,567,329	\$ 160,591,163	\$ 33,387,049	\$ 5,050,142	\$ 222,595,683	1,824	\$ 28,937,439
NC 8 Hudson	15,347	\$ 25,783,002	\$ 175,689,077	\$ 36,525,920	\$ 5,524,929	\$ 243,522,928	1,995	\$ 31,657,981
NC 9 Pittenger	8,930	\$ 15,002,076	\$ 102,226,298	\$ 21,252,941	\$ 3,214,731	\$ 141,696,045	1,161	\$ 18,420,486
NC 10 McHenry	13,810	\$ 23,201,633	\$ 158,099,260	\$ 32,868,980	\$ 4,971,779	\$ 219,141,652	1,795	\$ 28,488,415
NC 11 Meadows	11,515	\$ 19,345,647	\$ 131,824,015	\$ 27,406,333	\$ 4,145,496	\$ 182,721,491	1,497	\$ 23,753,794
NC 12 Adams	14,712	\$ 24,715,632	\$ 168,415,868	\$ 35,013,813	\$ 5,296,207	\$ 233,441,520	1,913	\$ 30,347,398
NC 13 Budd	9,609	\$ 16,143,839	\$ 110,006,437	\$ 22,870,439	\$ 3,459,394	\$ 152,480,109	1,249	\$ 19,822,414
ND 0 Cramer	8,246	\$ 13,853,280	\$ 94,398,239	\$ 19,625,480	\$ 2,968,560	\$ 130,845,559	1,072	\$ 17,009,923
NE 1 Fortenberry	6,822	\$ 11,460,239	\$ 78,091,716	\$ 16,235,339	\$ 2,455,766	\$ 108,243,060	887	\$ 14,071,598
NE 3 Smith	6,533	\$ 10,976,018	\$ 74,792,162	\$ 15,549,359	\$ 2,352,004	\$ 103,669,542	849	\$ 13,477,041
NH 1 Shea-Porter	6,708	\$ 11,269,464	\$ 76,791,742	\$ 15,965,073	\$ 2,414,885	\$ 106,441,164	872	\$ 13,837,351
NH 2 Kuster	5,095	\$ 8,559,576	\$ 58,326,183	\$ 12,126,067	\$ 1,834,195	\$ 80,846,021	662	\$ 10,509,983
NJ 1 Norcross	10,498	\$ 17,636,603	\$ 120,178,345	\$ 24,985,188	\$ 3,779,272	\$ 166,579,408	1,365	\$ 21,655,323
NJ 2 LoBiondo	11,015	\$ 18,505,726	\$ 126,100,673	\$ 26,216,445	\$ 3,965,513	\$ 174,788,356	1,432	\$ 22,722,486
NJ 3 MacArthur	9,403	\$ 15,797,331	\$ 107,645,279	\$ 22,379,552	\$ 3,385,142	\$ 149,207,304	1,222	\$ 19,396,949
NJ 4 Smith	7,488	\$ 12,579,622	\$ 85,719,348	\$ 17,821,131	\$ 2,695,633	\$ 118,815,733	973	\$ 15,446,045
NJ 5 Gottheimer	7,335	\$ 12,323,359	\$ 83,973,140	\$ 17,458,093	\$ 2,640,720	\$ 116,395,312	954	\$ 15,131,391
NJ 6 Pallone	10,074	\$ 16,925,125	\$ 115,330,230	\$ 23,977,260	\$ 3,626,812	\$ 159,859,427	1,310	\$ 20,781,726
NJ 7 Lance	6,721	\$ 11,291,823	\$ 76,944,101	\$ 15,996,749	\$ 2,419,676	\$ 106,652,348	874	\$ 13,864,805
NJ 8 Sires	13,483	\$ 22,650,739	\$ 154,345,390	\$ 32,088,548	\$ 4,853,730	\$ 213,938,407	1,753	\$ 27,811,993
NJ 9 Pascrell	14,528	\$ 24,407,373	\$ 166,315,341	\$ 34,577,111	\$ 5,230,151	\$ 230,529,976	1,889	\$ 29,968,897
NJ 10 Payne	16,689	\$ 28,037,362	\$ 191,050,610	\$ 39,719,596	\$ 6,008,006	\$ 264,815,575	2,170	\$ 34,426,025
NJ 11 Frelinghuysen	6,541	\$ 10,988,646	\$ 74,878,215	\$ 15,567,249	\$ 2,354,710	\$ 103,788,820	850	\$ 13,492,547
NJ 12 Watson Coleman	9,561	\$ 16,062,453	\$ 109,451,862	\$ 22,755,142	\$ 3,441,954	\$ 151,711,411	1,243	\$ 19,722,483
NM 1 Lujan Grisham	13,849	\$ 23,266,878	\$ 158,543,845	\$ 32,961,410	\$ 4,985,760	\$ 219,757,893	1,800	\$ 28,568,526
NM 2 Pearce	17,076	\$ 28,687,764	\$ 195,482,543	\$ 40,640,999	\$ 6,147,378	\$ 270,958,684	2,220	\$ 35,224,629
NM 3 Luján	15,006	\$ 25,209,438	\$ 171,780,731	\$ 35,713,371	\$ 5,402,022	\$ 238,105,563	1,951	\$ 30,953,723
NV 1 Titus	15,718	\$ 26,405,746	\$ 179,932,545	\$ 37,408,140	\$ 5,658,374	\$ 249,404,805	2,043	\$ 32,422,625
NV 2 Amodoi	7,685	\$ 12,910,101	\$ 87,971,283	\$ 18,289,310	\$ 2,766,450	\$ 121,937,144	999	\$ 15,851,829
NV 3 Rosen	9,166	\$ 15,398,724	\$ 104,929,114	\$ 21,814,859	\$ 3,299,727	\$ 145,442,423	1,192	\$ 18,907,515
NV 4 Kihuen	12,655	\$ 21,260,904	\$ 144,874,852	\$ 30,119,614	\$ 4,555,908	\$ 200,811,278	1,645	\$ 26,105,466
NY 1 Zeldin	7,867	\$ 13,217,329	\$ 90,064,780	\$ 18,724,550	\$ 2,832,285	\$ 124,838,945	1,023	\$ 16,229,063
NY 2 King	6,953	\$ 11,680,912	\$ 79,595,414	\$ 16,547,959	\$ 2,503,053	\$ 110,327,338	904	\$ 14,342,554
NY 3 Suozzi	6,539	\$ 10,986,061	\$ 74,860,597	\$ 15,563,586	\$ 2,354,156	\$ 103,764,400	850	\$ 13,489,372
NY 4 Rice	8,840	\$ 14,852,028	\$ 101,203,853	\$ 21,040,373	\$ 3,182,577	\$ 140,278,832	1,149	\$ 18,236,248
NY 5 Meeks	11,952	\$ 20,079,273	\$ 136,823,047	\$ 28,445,636	\$ 4,302,701	\$ 189,650,657	1,554	\$ 24,654,585
NY 6 Meng	7,543	\$ 12,672,620	\$ 86,353,050	\$ 17,952,878	\$ 2,715,561	\$ 119,694,109	981	\$ 15,560,234
NY 7 Velázquez	11,405	\$ 19,160,020	\$ 130,559,129	\$ 27,143,362	\$ 4,105,719	\$ 180,968,230	1,483	\$ 23,525,870
NY 8 Jeffries	17,296	\$ 29,056,899	\$ 197,997,879	\$ 41,163,940	\$ 6,226,478	\$ 274,445,196	2,248	\$ 35,677,875
NY 9 Clarke	13,344	\$ 22,418,224	\$ 152,760,997	\$ 31,759,151	\$ 4,803,905	\$ 211,742,277	1,735	\$ 27,526,496
NY 11 Donovan	10,343	\$ 17,375,973	\$ 118,402,374	\$ 24,615,962	\$ 3,723,423	\$ 164,117,731	1,345	\$ 21,335,305
NY 13 Espaillat	15,186	\$ 25,512,589	\$ 173,846,446	\$ 36,142,835	\$ 5,466,983	\$ 240,968,853	1,974	\$ 31,325,951
NY 14 Crowley	10,706	\$ 17,985,395	\$ 122,555,061	\$ 25,479,309	\$ 3,854,013	\$ 169,873,777	1,392	\$ 22,083,591
NY 15 Serrano	25,284	\$ 42,477,666	\$ 289,448,915	\$ 60,176,694	\$ 9,102,357	\$ 401,205,631	3,287	\$ 52,156,732
NY 16 Engel	11,722	\$ 19,692,300	\$ 134,186,158	\$ 27,897,425	\$ 4,219,779	\$ 185,995,661	1,524	\$ 24,179,436
NY 17 Lowey	7,220	\$ 12,130,262	\$ 82,657,346	\$ 17,184,538	\$ 2,599,342	\$ 114,571,488	939	\$ 14,894,293
NY 18 Maloney	10,327	\$ 17,348,732	\$ 118,216,748	\$ 24,577,370	\$ 3,717,585	\$ 163,860,435	1,342	\$ 21,301,857
NY 19 Faso	9,981	\$ 16,767,274	\$ 114,254,610	\$ 23,753,638	\$ 3,592,987	\$ 158,368,508	1,297	\$ 20,587,906
NY 20 Tonko	7,120	\$ 11,961,128	\$ 81,504,843	\$ 16,944,931	\$ 2,563,099	\$ 112,974,001	926	\$ 14,686,620
NY 21 Stefanik	13,732	\$ 23,069,227	\$ 157,197,028	\$ 32,681,406	\$ 4,943,406	\$ 217,891,067	1,785	\$ 28,325,839
NY 22 Tenney	9,805	\$ 16,472,807	\$ 112,248,069	\$ 23,336,476	\$ 3,529,887	\$ 155,587,239	1,275	\$ 20,226,341

District Representative	Opportunity Youth	Annual Cost Savings by Reconnecting Opportunity Youth in Each District					If Appropriations Increased to Reach 1M Opportunity Youth	
	Number in Each District	Increased Tax Revenue	Reduced Crime Costs	Reduced Public Health Costs	Reduced Welfare Costs	TOTAL	Youth Reconnected	Cost Savings From Reconnection
NY 23 Reed	11,197	\$ 18,811,545	\$ 128,184,566	\$ 26,649,688	\$ 4,031,045	\$ 177,676,844	1,456	\$ 23,097,990
NY 24 Katko	9,968	\$ 16,746,710	\$ 114,114,489	\$ 23,724,506	\$ 3,588,581	\$ 158,174,287	1,296	\$ 20,562,657
NY 25 Slaughter	9,907	\$ 16,644,096	\$ 113,415,260	\$ 23,579,136	\$ 3,566,592	\$ 157,205,084	1,288	\$ 20,436,661
NY 26 Higgins	7,824	\$ 13,143,611	\$ 89,562,453	\$ 18,620,116	\$ 2,816,488	\$ 124,142,667	1,017	\$ 16,138,547
NY 27 Collins	10,300	\$ 17,304,306	\$ 117,914,024	\$ 24,514,433	\$ 3,708,066	\$ 163,440,828	1,339	\$ 21,247,308
OH 1 Chabot	11,134	\$ 18,705,396	\$ 127,461,251	\$ 26,499,310	\$ 4,008,299	\$ 176,674,255	1,447	\$ 22,967,653
OH 2 Wenstrup	9,474	\$ 15,917,131	\$ 108,461,619	\$ 22,549,270	\$ 3,410,814	\$ 150,338,834	1,232	\$ 19,544,048
OH 3 Beatty	9,405	\$ 15,801,223	\$ 107,671,803	\$ 22,385,066	\$ 3,385,976	\$ 149,244,069	1,223	\$ 19,401,729
OH 4 Jordan	10,693	\$ 17,963,434	\$ 122,405,416	\$ 25,448,198	\$ 3,849,307	\$ 169,666,354	1,390	\$ 22,056,626
OH 5 Latta	7,059	\$ 11,859,117	\$ 80,809,723	\$ 16,800,415	\$ 2,541,239	\$ 112,010,495	918	\$ 14,561,364
OH 6 Johnson	11,911	\$ 20,010,334	\$ 136,353,288	\$ 28,347,973	\$ 4,287,929	\$ 188,999,523	1,548	\$ 24,569,938
OH 7 Gibbs	8,807	\$ 14,794,960	\$ 100,814,984	\$ 20,959,527	\$ 3,170,349	\$ 139,739,820	1,145	\$ 18,166,177
OH 8 Davidson	9,694	\$ 16,285,923	\$ 110,974,620	\$ 23,071,725	\$ 3,489,841	\$ 153,822,109	1,260	\$ 19,996,874
OH 9 Kaptur	13,606	\$ 22,857,482	\$ 155,754,163	\$ 32,381,433	\$ 4,898,032	\$ 215,891,110	1,769	\$ 28,065,844
OH 10 Turner	9,285	\$ 15,598,647	\$ 106,291,421	\$ 22,098,083	\$ 3,342,567	\$ 147,330,719	1,207	\$ 19,152,993
OH 11 Fudge	12,546	\$ 21,076,952	\$ 143,621,380	\$ 29,859,016	\$ 4,516,490	\$ 199,073,838	1,631	\$ 25,879,599
OH 12 Tiberi	9,067	\$ 15,232,883	\$ 103,799,049	\$ 21,579,917	\$ 3,264,189	\$ 143,876,037	1,179	\$ 18,703,885
OH 13 Ryan	10,835	\$ 18,202,390	\$ 124,033,699	\$ 25,786,719	\$ 3,900,512	\$ 171,923,321	1,409	\$ 22,350,032
OH 14 Joyce	8,579	\$ 14,413,479	\$ 98,215,518	\$ 20,419,096	\$ 3,088,603	\$ 136,136,696	1,115	\$ 17,697,770
OH 15 Stivers	9,628	\$ 16,174,578	\$ 110,215,897	\$ 22,913,986	\$ 3,465,981	\$ 152,770,441	1,252	\$ 19,860,157
OH 16 Renacci	7,852	\$ 13,191,730	\$ 89,890,339	\$ 18,688,284	\$ 2,826,799	\$ 124,597,152	1,021	\$ 16,197,630
OK 1 Bridenstine	13,082	\$ 21,978,514	\$ 149,764,752	\$ 31,136,229	\$ 4,709,682	\$ 207,589,177	1,701	\$ 26,986,593
OK 2 Mullin	16,010	\$ 26,896,113	\$ 183,273,975	\$ 38,102,827	\$ 5,763,453	\$ 254,036,367	2,081	\$ 33,024,728
OK 3 Lucas	14,990	\$ 25,182,770	\$ 171,599,010	\$ 35,675,591	\$ 5,396,308	\$ 237,853,678	1,949	\$ 30,920,978
OK 4 Cole	10,426	\$ 17,515,572	\$ 119,353,626	\$ 24,813,728	\$ 3,753,337	\$ 165,436,263	1,355	\$ 21,506,714
OK 5 Russell	11,342	\$ 19,055,030	\$ 129,843,713	\$ 26,994,626	\$ 4,083,221	\$ 179,976,590	1,474	\$ 23,396,957
OR 1 Bonamici	11,350	\$ 19,068,202	\$ 129,933,463	\$ 27,013,286	\$ 4,086,043	\$ 180,100,994	1,476	\$ 23,413,129
OR 2 Walden	13,428	\$ 22,558,657	\$ 153,717,927	\$ 31,958,097	\$ 4,833,998	\$ 213,068,679	1,746	\$ 27,698,928
OR 3 Blumenauer	8,804	\$ 14,791,429	\$ 100,790,921	\$ 20,954,524	\$ 3,169,592	\$ 139,706,466	1,145	\$ 18,161,841
OR 4 DeFazio	11,774	\$ 19,779,878	\$ 134,782,930	\$ 28,021,494	\$ 4,238,545	\$ 186,822,847	1,531	\$ 24,286,970
OR 5 Schrader	9,256	\$ 15,549,994	\$ 105,959,894	\$ 22,029,159	\$ 3,332,142	\$ 146,871,188	1,203	\$ 19,093,254
PA 1 Brady	14,875	\$ 24,989,656	\$ 170,283,101	\$ 35,402,012	\$ 5,354,926	\$ 236,029,695	1,934	\$ 30,683,860
PA 2 Evans	15,593	\$ 26,196,796	\$ 178,508,730	\$ 37,112,128	\$ 5,613,599	\$ 247,431,253	2,027	\$ 32,166,063
PA 3 Kelly	10,318	\$ 17,334,455	\$ 118,119,465	\$ 24,557,145	\$ 3,714,526	\$ 163,725,591	1,341	\$ 21,824,327
PA 4 Perry	6,929	\$ 11,641,115	\$ 79,324,228	\$ 16,491,579	\$ 2,494,525	\$ 109,951,446	901	\$ 14,293,688
PA 5 Thompson	12,169	\$ 20,444,357	\$ 139,310,782	\$ 28,962,839	\$ 4,380,934	\$ 193,098,912	1,582	\$ 25,102,859
PA 6 Costello	8,410	\$ 14,128,236	\$ 96,271,825	\$ 20,015,000	\$ 3,027,479	\$ 133,442,540	1,093	\$ 17,347,530
PA 7 Meehan	9,019	\$ 15,152,044	\$ 103,248,205	\$ 21,465,396	\$ 3,246,867	\$ 143,112,512	1,172	\$ 18,604,627
PA 8 Fitzpatrick	6,587	\$ 11,066,130	\$ 75,406,197	\$ 15,677,017	\$ 2,371,314	\$ 104,520,657	856	\$ 13,587,685
PA 9 Shuster	12,714	\$ 21,358,777	\$ 145,541,776	\$ 30,258,268	\$ 4,576,881	\$ 201,735,702	1,653	\$ 26,225,641
PA 10 Marino	9,618	\$ 16,157,618	\$ 110,100,331	\$ 22,889,959	\$ 3,462,347	\$ 152,610,256	1,250	\$ 19,839,333
PA 11 Barletta	11,621	\$ 19,523,550	\$ 133,036,276	\$ 27,658,363	\$ 4,183,618	\$ 184,401,808	1,511	\$ 23,972,235
PA 12 Rothfus	7,972	\$ 13,393,388	\$ 91,264,471	\$ 18,973,967	\$ 2,870,012	\$ 126,501,839	1,036	\$ 16,445,239
PA 13 Boyle	10,607	\$ 17,819,915	\$ 121,427,456	\$ 25,244,879	\$ 3,818,553	\$ 168,310,803	1,379	\$ 21,880,404
PA 14 Doyle	8,533	\$ 14,335,116	\$ 97,681,537	\$ 20,308,081	\$ 3,071,811	\$ 135,396,544	1,109	\$ 17,601,551
PA 15 Dent	7,969	\$ 13,387,463	\$ 91,224,095	\$ 18,965,573	\$ 2,868,742	\$ 126,445,873	1,036	\$ 16,437,963
PA 16 Smucker	11,521	\$ 19,355,300	\$ 131,889,794	\$ 27,420,009	\$ 4,147,564	\$ 182,812,667	1,498	\$ 23,765,647
PA 17 Cartwright	8,806	\$ 14,794,357	\$ 100,810,874	\$ 20,958,673	\$ 3,170,219	\$ 139,734,123	1,145	\$ 18,165,436
PA 18 Murphy	7,943	\$ 13,344,677	\$ 90,932,544	\$ 18,904,959	\$ 2,859,574	\$ 126,041,753	1,033	\$ 16,385,428
RI 1 Cicilline	6,105	\$ 10,255,876	\$ 69,885,010	\$ 14,529,157	\$ 2,197,688	\$ 96,867,731	794	\$ 12,592,805
RI 2 Langevin	6,680	\$ 11,222,924	\$ 76,474,616	\$ 15,899,143	\$ 2,404,912	\$ 106,001,596	868	\$ 13,780,207
SC 1 Sanford	9,350	\$ 15,707,689	\$ 107,034,449	\$ 22,252,560	\$ 3,365,933	\$ 148,360,632	1,215	\$ 19,286,882
SC 2 Wilson	13,264	\$ 22,283,135	\$ 151,840,483	\$ 31,567,775	\$ 4,774,958	\$ 210,466,351	1,724	\$ 27,360,626
SC 3 Duncan	12,053	\$ 20,249,648	\$ 137,984,010	\$ 28,687,002	\$ 4,339,210	\$ 191,259,870	1,567	\$ 24,863,783
SC 4 Gowdy	11,899	\$ 19,990,135	\$ 136,215,651	\$ 28,319,358	\$ 4,283,600	\$ 188,808,745	1,547	\$ 24,545,137
SC 5 Mulvaney	15,537	\$ 26,102,945	\$ 177,869,212	\$ 36,979,171	\$ 5,593,488	\$ 246,544,816	2,020	\$ 32,050,826
SC 6 Clyburn	14,501	\$ 24,361,710	\$ 166,004,191	\$ 34,512,423	\$ 5,220,366	\$ 230,098,691	1,885	\$ 29,912,830

District Representative	Opportunity Youth	Annual Cost Savings by Reconnecting Opportunity Youth in Each District					If Appropriations Increased to Reach 1M Opportunity Youth		
		Number in Each District	Increased Tax Revenue	Reduced Crime Costs	Reduced Public Health Costs	Reduced Welfare Costs	TOTAL	Youth Reconnected	Cost Savings From Reconnection
SC 7 Rice	13,029	\$ 21,887,934	\$ 149,147,523	\$ 31,007,906	\$ 4,690,272	\$ 206,733,634	1,694	\$ 26,875,372	
SD 0 Noem	12,748	\$ 21,416,640	\$ 145,936,060	\$ 30,340,240	\$ 4,589,280	\$ 202,282,220	1,657	\$ 26,296,689	
TN 1 Roe	10,304	\$ 17,310,703	\$ 117,957,617	\$ 24,523,496	\$ 3,709,436	\$ 163,501,253	1,340	\$ 21,255,163	
TN 2 Duncan	8,869	\$ 14,900,547	\$ 101,534,464	\$ 21,109,108	\$ 3,192,974	\$ 140,737,093	1,153	\$ 18,295,822	
TN 3 Fleischmann	12,562	\$ 21,104,600	\$ 143,809,775	\$ 29,898,184	\$ 4,522,414	\$ 199,334,973	1,633	\$ 25,913,547	
TN 4 DesJarlais	12,062	\$ 20,264,805	\$ 138,087,291	\$ 28,708,474	\$ 4,342,458	\$ 191,403,029	1,568	\$ 24,882,394	
TN 5 Cooper	9,573	\$ 16,083,453	\$ 109,594,959	\$ 22,784,892	\$ 3,446,454	\$ 151,909,758	1,245	\$ 19,748,269	
TN 6 Black	11,142	\$ 18,718,743	\$ 127,552,203	\$ 26,518,219	\$ 4,011,159	\$ 176,800,325	1,448	\$ 22,984,042	
TN 7 Blackburn	8,514	\$ 14,302,784	\$ 97,461,225	\$ 20,262,278	\$ 3,064,882	\$ 135,091,169	1,107	\$ 17,561,852	
TN 8 Kustoff	12,104	\$ 20,334,829	\$ 138,564,446	\$ 28,807,675	\$ 4,357,463	\$ 192,064,413	1,574	\$ 24,968,374	
TN 9 Cohen	14,306	\$ 24,034,167	\$ 163,772,267	\$ 34,048,404	\$ 5,150,179	\$ 227,005,017	1,860	\$ 29,510,652	
TX 1 Gohmert	14,270	\$ 23,973,185	\$ 163,356,725	\$ 33,962,012	\$ 5,137,111	\$ 226,429,033	1,855	\$ 29,435,774	
TX 2 Poe	9,633	\$ 16,184,003	\$ 110,280,119	\$ 22,927,337	\$ 3,468,001	\$ 152,859,459	1,252	\$ 19,871,730	
TX 3 Johnson	8,732	\$ 14,668,979	\$ 99,956,528	\$ 20,781,053	\$ 3,143,353	\$ 138,549,912	1,135	\$ 18,011,489	
TX 4 Ratcliffe	14,867	\$ 24,976,827	\$ 170,195,686	\$ 35,383,838	\$ 5,352,177	\$ 235,908,529	1,933	\$ 30,668,109	
TX 5 Hensarling	13,419	\$ 22,543,389	\$ 153,613,890	\$ 31,936,468	\$ 4,830,726	\$ 212,924,473	1,744	\$ 27,680,182	
TX 6 Barton	9,492	\$ 15,946,647	\$ 108,662,745	\$ 22,591,084	\$ 3,417,139	\$ 150,617,614	1,234	\$ 19,580,290	
TX 7 Culberson	9,783	\$ 16,435,680	\$ 111,995,085	\$ 23,283,880	\$ 3,521,931	\$ 155,236,577	1,272	\$ 20,180,755	
TX 8 Brady	14,398	\$ 24,187,968	\$ 164,820,287	\$ 34,266,288	\$ 5,183,136	\$ 228,457,679	1,872	\$ 29,699,498	
TX 9 Green	13,103	\$ 22,013,196	\$ 150,001,080	\$ 31,185,361	\$ 4,717,113	\$ 207,916,751	1,703	\$ 27,029,178	
TX 10 McCaul	9,641	\$ 16,197,233	\$ 110,370,270	\$ 22,946,080	\$ 3,470,836	\$ 152,984,418	1,253	\$ 19,887,974	
TX 11 Conaway	16,513	\$ 27,741,102	\$ 189,031,855	\$ 39,299,895	\$ 5,944,522	\$ 262,017,375	2,147	\$ 34,062,259	
TX 12 Granger	10,379	\$ 17,436,206	\$ 118,812,810	\$ 24,701,292	\$ 3,736,330	\$ 164,686,638	1,349	\$ 21,409,263	
TX 13 Thornberry	15,272	\$ 25,657,133	\$ 174,831,388	\$ 36,347,605	\$ 5,497,957	\$ 242,334,083	1,985	\$ 31,503,431	
TX 14 Weber	16,092	\$ 27,035,242	\$ 184,222,021	\$ 38,299,926	\$ 5,793,266	\$ 255,350,455	2,092	\$ 33,195,559	
TX 15 Gonzalez	19,943	\$ 33,503,546	\$ 228,297,974	\$ 47,463,357	\$ 7,179,331	\$ 316,444,208	2,593	\$ 41,137,747	
TX 16 O'Rourke	14,252	\$ 23,943,456	\$ 163,154,145	\$ 33,919,896	\$ 5,130,741	\$ 226,148,237	1,853	\$ 29,399,271	
TX 17 Flores	10,053	\$ 16,889,742	\$ 115,089,128	\$ 23,927,135	\$ 3,619,230	\$ 159,525,236	1,307	\$ 20,738,281	
TX 18 Jackson Lee	16,122	\$ 27,084,352	\$ 184,556,662	\$ 38,369,498	\$ 5,803,790	\$ 255,814,302	2,096	\$ 33,255,859	
TX 19 Arrington	14,999	\$ 25,198,305	\$ 171,704,867	\$ 35,697,599	\$ 5,399,637	\$ 238,000,407	1,950	\$ 30,940,053	
TX 20 Castro	13,104	\$ 22,013,944	\$ 150,006,174	\$ 31,186,420	\$ 4,717,274	\$ 207,923,812	1,703	\$ 27,030,096	
TX 21 Smith	7,920	\$ 13,306,185	\$ 90,670,252	\$ 18,850,428	\$ 2,851,325	\$ 125,678,191	1,030	\$ 16,338,165	
TX 22 Olson	11,639	\$ 19,552,875	\$ 133,236,097	\$ 27,699,906	\$ 4,189,902	\$ 184,678,779	1,513	\$ 24,008,241	
TX 23 Hurd	19,046	\$ 31,996,460	\$ 218,028,473	\$ 45,328,319	\$ 6,856,384	\$ 302,209,636	2,476	\$ 39,287,253	
TX 24 Marchant	7,131	\$ 11,979,699	\$ 81,631,386	\$ 16,971,240	\$ 2,567,078	\$ 113,149,403	927	\$ 14,709,422	
TX 25 Williams	11,318	\$ 19,013,701	\$ 129,562,086	\$ 26,936,076	\$ 4,074,364	\$ 179,586,228	1,471	\$ 23,346,210	
TX 26 Burgess	8,139	\$ 13,673,377	\$ 93,172,355	\$ 19,370,618	\$ 2,930,009	\$ 129,146,360	1,058	\$ 16,789,027	
TX 27 Farenthold	17,037	\$ 28,622,856	\$ 195,040,247	\$ 40,549,045	\$ 6,133,469	\$ 270,345,617	2,215	\$ 35,144,930	
TX 28 Cuellar	20,585	\$ 34,582,684	\$ 235,651,374	\$ 48,992,136	\$ 7,410,575	\$ 326,636,769	2,676	\$ 42,462,780	
TX 29 Green	19,066	\$ 32,031,696	\$ 218,268,579	\$ 45,378,237	\$ 6,863,935	\$ 302,542,447	2,479	\$ 39,330,518	
TX 30 Johnson	18,315	\$ 30,769,677	\$ 209,668,997	\$ 43,590,376	\$ 6,593,502	\$ 290,622,553	2,381	\$ 37,780,932	
TX 31 Carter	9,894	\$ 16,621,752	\$ 113,263,004	\$ 23,547,482	\$ 3,561,804	\$ 156,994,042	1,286	\$ 20,409,226	
TX 32 Sessions	11,280	\$ 18,949,842	\$ 129,126,946	\$ 26,845,610	\$ 4,060,680	\$ 178,983,078	1,466	\$ 23,267,800	
TX 33 Veasey	14,571	\$ 24,478,531	\$ 166,800,223	\$ 34,677,919	\$ 5,245,399	\$ 231,202,071	1,894	\$ 30,056,269	
TX 34 Vela	22,690	\$ 38,118,946	\$ 259,747,973	\$ 54,001,841	\$ 8,168,346	\$ 360,037,105	2,950	\$ 46,804,824	
TX 35 Doggett	11,677	\$ 19,617,642	\$ 133,677,431	\$ 27,791,660	\$ 4,203,780	\$ 185,290,513	1,518	\$ 24,087,767	
TX 36 Babin	14,566	\$ 24,471,221	\$ 166,750,413	\$ 34,667,563	\$ 5,243,833	\$ 231,133,031	1,894	\$ 30,047,294	
UT 1 Bishop	10,874	\$ 18,268,466	\$ 124,483,951	\$ 25,880,327	\$ 3,914,671	\$ 172,547,416	1,414	\$ 22,431,164	
UT 2 Stewart	10,898	\$ 18,308,202	\$ 124,754,714	\$ 25,936,619	\$ 3,923,186	\$ 172,922,720	1,417	\$ 22,479,954	
UT 3 Chaffetz	14,110	\$ 23,704,943	\$ 161,528,884	\$ 33,582,002	\$ 5,079,631	\$ 223,895,459	1,834	\$ 29,106,410	
UT 4 Love	8,518	\$ 14,310,390	\$ 97,513,049	\$ 20,273,052	\$ 3,066,512	\$ 135,163,002	1,107	\$ 17,571,190	
VA 1 Wittman	10,792	\$ 18,131,334	\$ 123,549,516	\$ 25,686,057	\$ 3,885,286	\$ 171,252,194	1,403	\$ 22,262,785	
VA 2 Taylor	10,173	\$ 17,091,189	\$ 116,461,818	\$ 24,212,518	\$ 3,662,398	\$ 161,427,923	1,323	\$ 20,985,630	
VA 3 Scott	12,343	\$ 20,736,074	\$ 141,298,583	\$ 29,376,104	\$ 4,443,444	\$ 195,854,206	1,605	\$ 25,461,047	
VA 4 McEachin	10,059	\$ 16,898,913	\$ 115,151,622	\$ 23,940,127	\$ 3,621,196	\$ 159,611,858	1,308	\$ 20,749,542	
VA 5 Garrett	10,715	\$ 18,001,870	\$ 122,667,329	\$ 25,502,650	\$ 3,857,544	\$ 170,029,392	1,393	\$ 22,103,821	
VA 6 Goodlatte	10,639	\$ 17,873,602	\$ 121,793,292	\$ 25,320,937	\$ 3,830,058	\$ 168,817,889	1,383	\$ 21,946,326	

District Representative	Opportunity Youth	Annual Cost Savings by Reconnecting Opportunity Youth in Each District					If Appropriations Increased to Reach 1M Opportunity Youth	
	Number in Each District	Increased Tax Revenue	Reduced Crime Costs	Reduced Public Health Costs	Reduced Welfare Costs	TOTAL	Youth Reconnected	Cost Savings From Reconnection
VA 7 Brat	9,633	\$ 16,183,324	\$ 110,275,494	\$ 22,926,376	\$ 3,467,855	\$ 152,853,049	1,252	\$ 19,870,896
VA 8 Beyer	5,558	\$ 9,337,084	\$ 63,624,230	\$ 13,227,535	\$ 2,000,804	\$ 88,189,653	723	\$ 11,464,655
VA 9 Griffith	9,465	\$ 15,900,525	\$ 108,348,458	\$ 22,525,743	\$ 3,407,255	\$ 150,181,981	1,230	\$ 19,523,658
VA 10 Comstock	6,471	\$ 10,870,489	\$ 74,073,071	\$ 15,399,859	\$ 2,329,390	\$ 102,672,809	841	\$ 13,347,465
VA 11 Connolly	9,377	\$ 15,753,595	\$ 107,347,259	\$ 22,317,593	\$ 3,375,770	\$ 148,794,218	1,219	\$ 19,343,248
VT 0 Welch	6,177	\$ 10,377,360	\$ 70,712,821	\$ 14,701,260	\$ 2,223,720	\$ 98,015,161	803	\$ 12,741,971
WA 1 DelBene	6,476	\$ 10,879,114	\$ 74,131,844	\$ 15,412,078	\$ 2,331,239	\$ 102,754,274	842	\$ 13,358,056
WA 2 Larsen	9,435	\$ 15,850,293	\$ 108,006,170	\$ 22,454,581	\$ 3,396,491	\$ 149,707,535	1,227	\$ 19,461,980
WA 3 Herrera Beutler	10,857	\$ 18,239,545	\$ 124,286,878	\$ 25,839,355	\$ 3,908,474	\$ 172,274,252	1,411	\$ 22,395,653
WA 4 Newhouse	14,114	\$ 23,712,325	\$ 161,579,185	\$ 33,592,460	\$ 5,081,212	\$ 223,965,182	1,835	\$ 29,115,474
WA 5 McMorris Rodgers	12,882	\$ 21,641,605	\$ 147,469,007	\$ 30,658,941	\$ 4,637,487	\$ 204,407,040	1,675	\$ 26,572,915
WA 6 Kilmer	12,254	\$ 20,587,086	\$ 140,283,361	\$ 29,165,039	\$ 4,411,518	\$ 194,447,005	1,593	\$ 25,278,111
WA 7 Jayapal	5,459	\$ 9,171,474	\$ 62,495,744	\$ 12,992,922	\$ 1,965,316	\$ 86,625,456	710	\$ 11,261,309
WA 8 Reichert	9,934	\$ 16,689,543	\$ 113,724,945	\$ 23,643,520	\$ 3,576,331	\$ 157,634,338	1,291	\$ 20,492,464
WA 9 Smith	7,407	\$ 12,444,185	\$ 84,796,463	\$ 17,629,262	\$ 2,666,611	\$ 117,536,522	963	\$ 15,279,748
WA 10 Heck	13,934	\$ 23,408,715	\$ 159,510,346	\$ 33,162,346	\$ 5,016,153	\$ 221,097,560	1,811	\$ 28,742,683
WI 1 Ryan	8,034	\$ 13,497,228	\$ 91,972,046	\$ 19,121,072	\$ 2,892,263	\$ 127,482,609	1,044	\$ 16,572,739
WI 2 Pocan	4,684	\$ 7,869,831	\$ 53,626,156	\$ 11,148,927	\$ 1,686,392	\$ 74,331,305	609	\$ 9,663,070
WI 3 Kind	8,937	\$ 15,014,310	\$ 102,309,661	\$ 21,270,272	\$ 3,217,352	\$ 141,811,594	1,162	\$ 18,435,507
WI 4 Moore	14,717	\$ 24,723,933	\$ 168,472,431	\$ 35,025,572	\$ 5,297,986	\$ 233,519,923	1,913	\$ 30,357,590
WI 5 Sensenbrenner	5,392	\$ 9,058,449	\$ 61,725,573	\$ 12,832,803	\$ 1,941,096	\$ 85,557,921	701	\$ 11,122,530
WI 6 Grothman	7,905	\$ 13,280,054	\$ 90,492,194	\$ 18,813,410	\$ 2,845,726	\$ 125,431,383	1,028	\$ 16,306,080
WI 7 Duffy	6,855	\$ 11,516,850	\$ 78,477,471	\$ 16,315,538	\$ 2,467,896	\$ 108,777,756	891	\$ 14,141,108
WI 8 Gallagher	5,595	\$ 9,399,266	\$ 64,047,946	\$ 13,315,626	\$ 2,014,128	\$ 88,776,966	727	\$ 11,541,006
WV 1 McKinley	9,386	\$ 15,768,737	\$ 107,450,438	\$ 22,339,044	\$ 3,379,015	\$ 148,937,234	1,220	\$ 19,361,840
WV 2 Mooney	11,556	\$ 19,414,562	\$ 132,293,614	\$ 27,503,963	\$ 4,160,263	\$ 183,372,402	1,502	\$ 23,838,412
WV 3 Jenkins	14,185	\$ 23,830,061	\$ 162,381,456	\$ 33,759,253	\$ 5,106,442	\$ 225,077,211	1,844	\$ 29,260,037
WY 0 Cheney	10,196	\$ 17,129,280	\$ 116,721,373	\$ 24,266,480	\$ 3,670,560	\$ 161,787,693	1,325	\$ 21,032,400
AVERAGE	11,315	\$ 19,008,530	\$ 129,526,850	\$ 26,928,750	\$ 4,073,256	\$ 179,537,386	1,471	\$ 23,339,860



**OPPORTUNITY
YOUTH
NETWORK**