

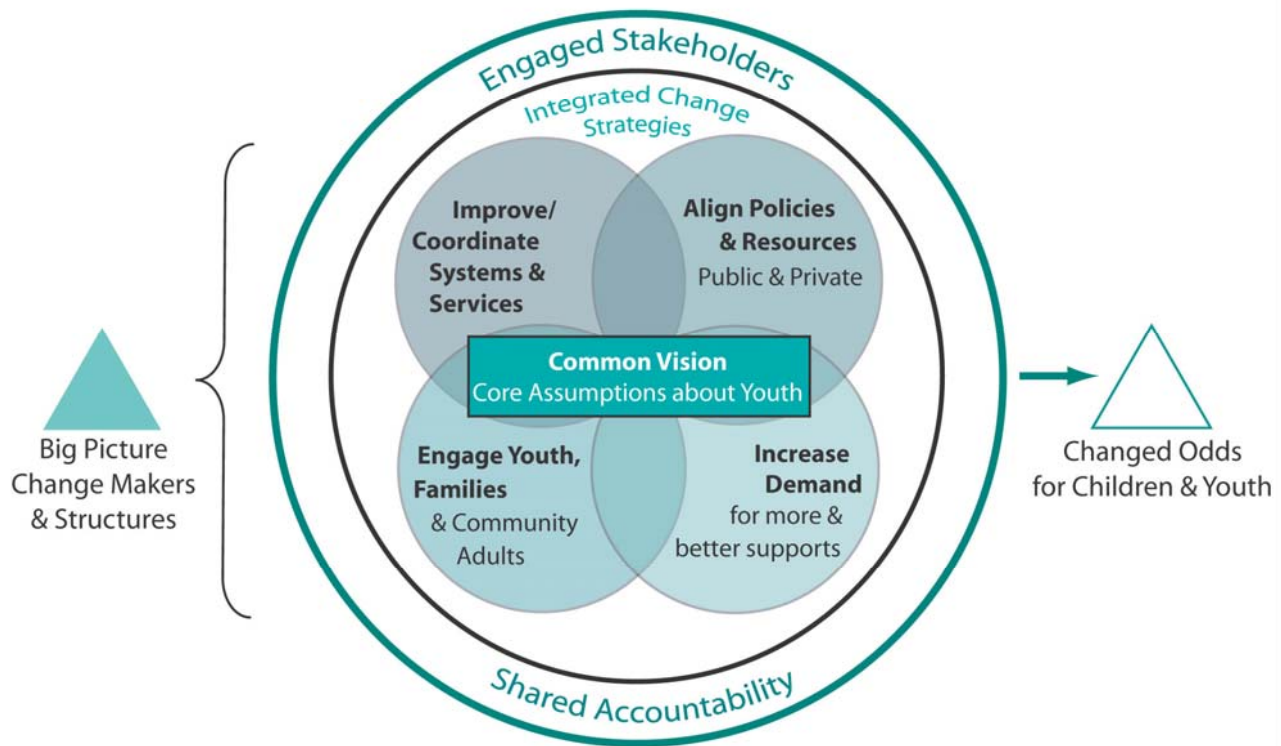


# CORE ASSUMPTIONS ABOUT CHANGE

## COMMUNITIES NEED TO . . .

ENGAGE BIG TENT STAKEHOLDERS...						
<i>...Build tri-sector partnerships</i>	<b>SECTORS</b>	<b>Public / Private / Nonprofit</b>				
<i>...that involve both professionals and lay community members</i>	<b>ROLES</b>	<table border="1"> <thead> <tr> <th>PROFESSIONALS</th> <th>LAY PEOPLE</th> </tr> </thead> <tbody> <tr> <td>Practitioners Researchers Policy makers Media/Communications Advocates/Organizers Business Leaders Philanthropists/Funders</td> <td>Young people Families Community members (College Students) (Retirees)</td> </tr> </tbody> </table>	PROFESSIONALS	LAY PEOPLE	Practitioners Researchers Policy makers Media/Communications Advocates/Organizers Business Leaders Philanthropists/Funders	Young people Families Community members (College Students) (Retirees)
PROFESSIONALS	LAY PEOPLE					
Practitioners Researchers Policy makers Media/Communications Advocates/Organizers Business Leaders Philanthropists/Funders	Young people Families Community members (College Students) (Retirees)					
<i>...to connect efforts across the "allied youth fields"</i>	<b>SYSTEMS &amp; SERVICES</b>	<table border="1"> <thead> <tr> <th>CHILD/YOUTH FOCUSED</th> <th>GENERAL</th> </tr> </thead> <tbody> <tr> <td>Childcare After-school Youth-serving organizations Prevention Education Youth employment Child Welfare Juvenile Justice</td> <td>Health care Civil rights Community service Organizing Faith-based Libraries &amp; Museums Parks &amp; Recreation</td> </tr> </tbody> </table>	CHILD/YOUTH FOCUSED	GENERAL	Childcare After-school Youth-serving organizations Prevention Education Youth employment Child Welfare Juvenile Justice	Health care Civil rights Community service Organizing Faith-based Libraries & Museums Parks & Recreation
CHILD/YOUTH FOCUSED	GENERAL					
Childcare After-school Youth-serving organizations Prevention Education Youth employment Child Welfare Juvenile Justice	Health care Civil rights Community service Organizing Faith-based Libraries & Museums Parks & Recreation					
<i>...engaging actors at all levels.</i>	<b>LEVELS</b>	Front-line / Mid-Level / Leadership (Grassroots - Grasstops)				
IMPLEMENT BIG PAYOFF STRATEGIES...						
	<b>IMPROVING SYSTEMS</b>	<ul style="list-style-type: none"> <li>Program/Services Coordination</li> <li>Workforce Strengthening/Stabilization</li> <li>Capacity Building &amp; Technical Assistance</li> <li>Defining, Assessing &amp; Improving Quality</li> <li>Performance Measurement/Evaluation</li> </ul>				
	<b>ALIGNING RESOURCES</b>	<ul style="list-style-type: none"> <li>Conducting Needs/Assets Inventories</li> <li>Coordinating Policies &amp; Practices</li> <li>Establishing Funding Priorities</li> <li>Exploring Funding Alternatives</li> <li>Assessing, Changing, Creating Policies</li> </ul>				
	<b>MOBILIZING DEMAND</b>	<ul style="list-style-type: none"> <li>Constituency Building</li> <li>Public Awareness/Education</li> <li>Opinion Polling</li> <li>Collecting/Using/Sharing Data</li> <li>Public Outreach (hearings, summits)</li> <li>Advocacy &amp; Organizing</li> </ul>				
	<b>ENGAGING YOUTH &amp; FAMILIES</b>	<ul style="list-style-type: none"> <li>Family Involvement/Personal Responsibility</li> <li>Skill/Leadership Development</li> <li>Volunteer Service</li> <li>Governance/Organizing/Advocacy</li> <li>Philanthropy</li> <li>Entrepreneurism</li> </ul>				
CREATE BIG TICKET ACCOUNTABILITY						
	<b>ABOUT YOUTH</b>	<ul style="list-style-type: none"> <li>Child and Youth Well-Being</li> </ul>				
	<b>ABOUT COMMUNITY SUPPORTS</b>	<ul style="list-style-type: none"> <li>Program Availability (e.g., program inventories)</li> <li>Program Quality (e.g., program evaluations)</li> <li>Systems Effectiveness (e.g., performance reports)</li> <li>Stakeholder Perceptions (e.g., interviews, surveys)</li> </ul>				
	<b>ABOUT LEADERSHIP &amp; CHANGE</b>	<ul style="list-style-type: none"> <li>Policy Priorities (e.g., policy platforms)</li> <li>Amount/Allocation of Funding (e.g., children's budgets)</li> <li>Public Will (e.g., polls, surveys)</li> <li>Political Will (e.g., political leadership assessment)</li> </ul>				
BUILD SUSTAINED CAPACITY FOR CHANGE						
	<b>STRUCTURES/PLANS</b>	<ul style="list-style-type: none"> <li>Coordinating Councils, Children's Cabs, Cross-Sector Collaboration</li> <li>Community Agenda</li> </ul>				

**Ready by 21™**  
Core Assumptions about Changes



Change makers need to assess their state's and community's current change horsepower in five key areas:

- **Big Picture Vision:** A core set of assumptions about youth inputs and outcomes is critical for creating a shared vision.
- **Big Payoff Strategies:** The underlying change strategies (not specific programs) that, when combined, ensure that communities have the capacity to push for change from all sides:
  - youth and family engagement,
  - community support and demand,
  - program quality and service coordination, and
  - resource allocation and policy alignment.
- **Big Tent Stakeholder Action:** Stakeholder cooperation that has all stakeholders at all levels sharing a common understanding of the need for Big Picture planning and prioritization, and actively working to connect their passions and programs to the greater whole,
- **Big Ticket Accountability:** A public commitment to assess and prioritize the use of all resources (e.g. not just new or discretionary programs) against shared standards and goals.
- **Big Picture Change Managers/Structures:** Helps to build momentum and commitment by looking at overall efforts with an eye towards linking and aligning existing efforts and addressing critical gaps.

These elements are bundled together into a graphic that emphasizes the change strategies rather than the stakeholders or the issues as a way of emphasizing the need for change makers to focus on monitoring, strengthening and aligning overall change efforts.